

Community Indicators of Alcohol and Drug Abuse Risk

Plumas County



***Prepared for:
California Department of
Alcohol and Drug Programs***

***Prepared by:
EMT Group, Inc.
391 South Lexington Drive, Suite 110
Folsom, CA***

July 2001

Table of Contents

Introduction	1- 4
Alcohol and Drug Risk Composite	5-7
Community Domain	8-21
Unemployment	9
Population Growth	10
Legal Foreign Immigration	11
Reported Crimes	12
Retail Liquor Licenses	13
Adult Arrests for Drug Related Offenses	14
Adult Arrests for Driving Under the Influence	15
Adult Arrests for Alcohol Violations	16
Alcohol Involved Motor Vehicle Accidents	17
Alcohol and Drug Treatment Admissions	18
Hospital Discharges Due to Alcohol and Other Drug Use	19
HIV/AIDS Incidence	20
Deaths Due to Alcohol and Other Drug Use	21
Family Domain	22-26
AFDC	23
Domestic Violence Calls for Assistance	24
Emergency Response Dispositions	25
Children in Foster Care	26
School Domain	27-30
High School Dropouts	28
School Alcohol and Drug Related Crime Incidents	29
School Violence Incidents	30
Individual/Peer Domain	31-37
Treatment Admissions Under 18 Years	32
Juvenile Arrests for Alcohol and Drug Related Offenses	33
Reported Runaways	34
Teen Births	35
Juvenile Law Enforcement Dispositions	36
Adolescent Suicide	37
State and County Data Comparisons	38-55
County Ranking Table	39
Graphic Representation of Three Year Averages	43
Appendices	
Appendix A: County Cluster Description	
Appendix B: Sources of Indicator Data	

Introduction

In the mid-1990s the California Department of Alcohol and Drug Programs (ADP), in collaboration with the EMT Group, Inc., began work on improving the state's prevention information systems. A primary goal of this effort was to develop a management information system for consistently and uniformly documenting a) levels of needs for state substance abuse prevention programming b) the nature and extent of program efforts in prevention implemented throughout the state, and c) the effectiveness of these prevention efforts in obtaining intended outcomes.

A key component of this information system was the continuous collection, monitoring, and reporting of selected community-level indicators that would serve as direct and indirect measures of alcohol and other drug use prevalence and related problems. This information system was designed to assist with statewide prevention planning and policy-making by providing useful, systematic data about prevention needs and related conditions throughout the state.

The present report is a product of this ongoing effort. Prepared by the EMT Group, Inc. with ADP funding administered through the University of California, San Francisco, Center for Substance Abuse Policy Research, its purpose is to provide timely, relevant information on the status of alcohol and other drug use problems in California in order to facilitate planning and monitoring of prevention outcomes. Specifically, the report may serve as a tool for planners, policy-makers, and practitioners in the field in their efforts to:

- Determine the prevalence of a problem in the community;
- Identify patterns of need for services;
- Forecast service needs;
- Establish appropriate program resource levels;
- Understand environmental influences in the community; and
- Determine whether intended social change is occurring

The report compiles data on 26 community indicators, including measures of risk factors associated with alcohol and other drug use, measures of overall substance use prevalence, and measures of the consequences associated with problem use. Each indicator and its population-based rate is reported in six-year trends with state and county-level comparisons to allow for monitoring of changes in problem status over time and across geographic area.

Introduction (continued)...

How is the information collected?

The information contained in the report was gathered from public records that are maintained and disseminated by eight major state agencies (“archival data”). This reliance on state level data sources ensures that the information reported is uniform across counties and over time (i.e., all counties use the same data collection procedures), and allows for reliable comparisons between counties and the state, and among counties with similar demographic characteristics (“like-counties”). Each agency source contributing to the report is listed in Table I.1.

<i>California Alcohol Beverage Control</i>
<i>California Department of Alcohol & Drug Programs</i>
<i>California Department of Education</i>
<i>California Department of Health Services</i>
<i>California Highway Patrol</i>
<i>California Department of Finance</i>
<i>California Department of Justice</i>
<i>California Department of Social Services</i>

How were the indicators selected?

The twenty-six indicators contained in the report were selected based on several key criteria, including:

- Validity: How well does the information measure what it is supposed to measure?
- Reliability: Is the data collected in a consistent manner from year-to-year?
- Availability: Is the information accessible in a timely and useable format?
- Appropriateness and relevance: Does the indicator measure risks or outcomes that have an established theoretical or empirical relationship to substance use and related problems?

As the risk and outcome information system continues to evolve and as new and more sophisticated measures become available, the set of indicators may be expanded or modified, and new selection criteria may be added.

How are the indicators organized?

The organization of the report is based on a framework of alcohol and drug abuse risk and protective factors developed by Hawkins and Catalano through their ongoing work in the prevention research field. This framework identifies four major domains of risk for substance abuse and related problems, including:

-
- **Community factors**, such as the availability of substances, community laws and norms favorable to use, extreme economic deprivation, high rates of transition and mobility and social disorganization;
 - **Family factors**, such as family history of substance abuse, poor family management practices, parental drug use and favorable attitudes towards drug use, and family conflict;
 - **School factors**, such as academic failure, low commitment to school , school-related problem behaviors;
 - **Individual and peer factors**, such as peer rejection, early and persistent problem behavior, alienation and rebelliousness, friends who use drugs, favorable attitudes toward drug use, and early initiation of drug use.

In addition to the four broad domains, indicators are further classified into subdomains which group measures that are conceptually linked within the same broad domain area. Together, these domains and subdomains provide a logical basis for organizing indicators as they relate to differing prevention strategies and outcomes.

How is the information presented?

The report is designed to serve as a simple, easy-to-use resource for understanding and interpreting community-level data on substance use in California. To facilitate its use, the document contains several basic analytic techniques to assist with data interpretation.

First, in order to make meaningful comparisons between geographic areas that differ in population size, or comparisons between differing time points, each raw indicator has been converted into a population-based rate that describes the event in relation to a standard population size, such as the number of occurrences for every 1,000 people residing in the state or in a given county. Rates are calculated as the number of events divided by the total population size, then multiplied by the population standard (e.g., 1,000). Although rates are intended to facilitate interpretation, it should be noted that in cases where an indicator measures a relatively rare event (e.g., deaths due to alcohol and drug use) rates may be unstable, or prone to wide fluctuations from year to year, particularly when applied to relatively small populations. For this reason, rates measuring rare events or rates for counties with very small population size should be interpreted with caution.

Also for comparative purposes, data is presented at both the county and state level to allow county rates to be evaluated against a relative average. Each indicator is also compared to a three-year average rate for a subset of counties that are considered to be similar in demographic characteristics to the county under consideration (see Appendix A for groupings of “like-counties”). Characteristics that contribute to the classification of “like-counties” include the relative size of the youth population, race/ethnic distribution, poverty status, and proportion of the population living in urban or rural settings.

Introduction (continued)...

For each indicator, counties are also ranked in ascending order based on an average of their three most current years of data. A low rank (e.g., 4th of 58) indicates that the county rate is low relative to other counties in the state and thus, that the population has a low relative level of substance use risk for that indicator.

Throughout the report, information is presented for three to six years of data depending on the availability of the indicator. For those indicators with six complete years of information, the trend in rates over time has been analyzed using a simple correlation to determine both the direction of the trend and whether the trend is statistically meaningful (i.e., whether a true relationship exists between time in years and the value of the rate). Trends found to be significant are labeled as increasing or declining, while those that show no statistical importance are considered “undetermined” trends.

In addition to presenting data at the indicator level, individual measures have been mathematically combined into a standardized composite score measuring overall alcohol and other drug abuse risk. To calculate the composite score, individual indicators were first converted into standardized rates (also known as z-scores) that measure the relative deviation of the county rate from the statewide average. For example, a standardized score of .75 would indicate that the county’s absolute rate (e.g., 14.8 arrests per 1,000 population) would fall .75 standard deviations above the state average, while a standardized rate of -.75 would fall .75 deviations below the statewide mean. Once rates have been standardized to a common scale, they are averaged to create an aggregate measure of total alcohol and other drug risk.

Collectively, these analytic tools will help translate statistical observations and data into a “real world” profile of community conditions related to alcohol and other drug use.

How is the report organized?

The body of the report is organized into three major sections. The first section presents information on overall alcohol and drug abuse risk as measured by the standardized composite score. The second section presents county-level data for each of the twenty-six indicators, organized according to the four major domain areas. The reports concludes with a section presenting state and county level comparative data , including geographic depictions of three-year average rates for all counties in California.

Alcohol & Drug Risk Composite

Alcohol & Drug Abuse Risk Indicator

Standardized Composite Score

Table AD.1
Composite Indicator of Alcohol & Drug Abuse Risk

	1994	1995	1996	1997	1998	1999
Alcohol & Drug Abuse Risk	.09	.08	-.07	.38	.21	.47

Plumas	.35
California	.0002
County Cluster Urban "C"	.16
Statewide Ranking	51st

Exhibit AD.1
Alcohol & Drug Risk

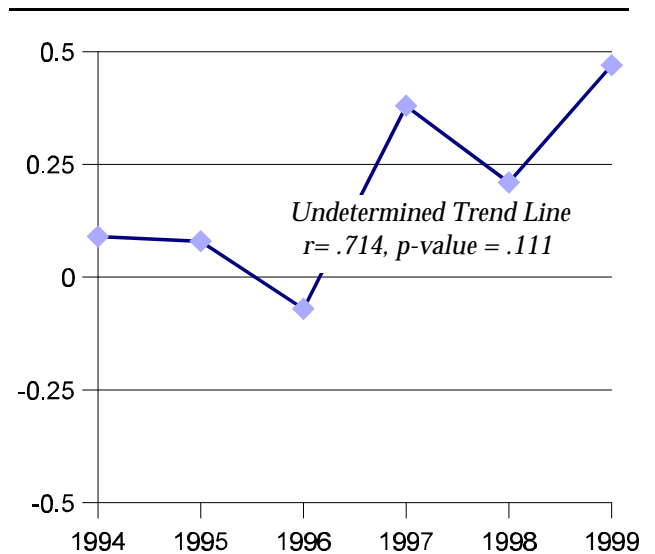


Table AD.3
Yearly Composite Rates for Subdomains
1994-1999

	1994	1995	1996	1997	1998	1999
Community	.18	.3	.33	.24	.14	.32
Family	-.11	-.15	-.33	-.09	-.2	-.22
School	-.3	-.93	-.4	-.84	-.93	-.21
Individual	.1	-.1	-.37	1.6	.86	1.48

Standardizing Rates

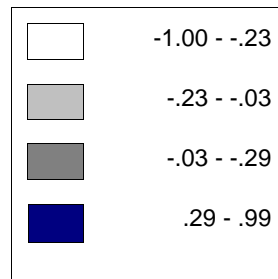
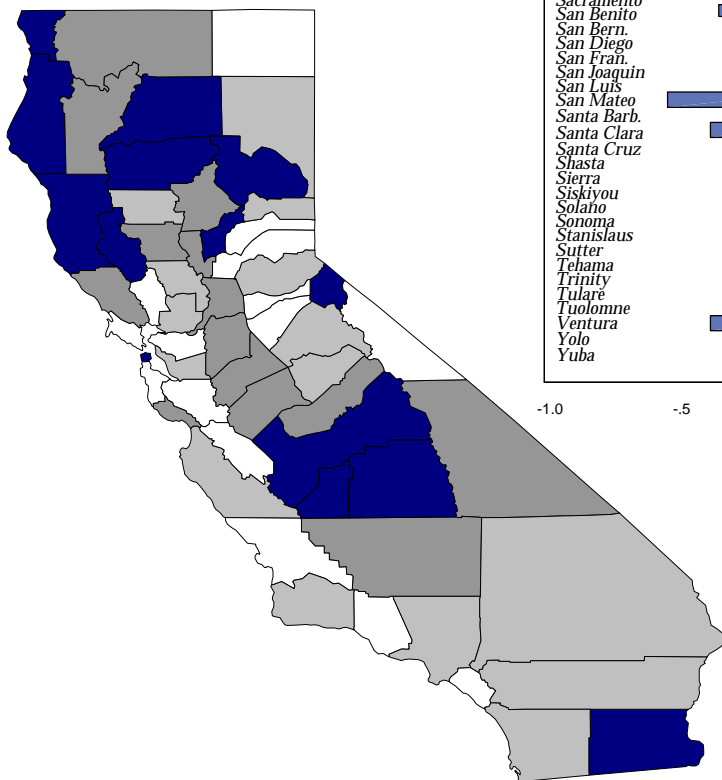
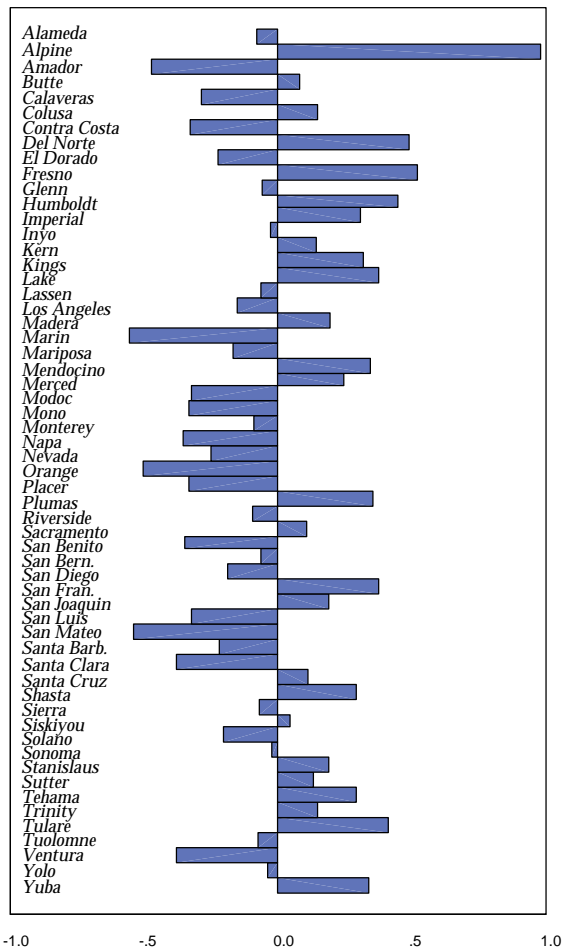
The composite score of alcohol and drug risk is calculated by standardizing each of the indicator rates to a common scale (z-score) based on a mathematical calculation of the standard deviation. This common scale allows indicators to be combined, through averaging, into a single measure of substance use risk that may be compared across county and over time.

Table AD.4
3-Year Avg. Composite Rates
for Subdomains

Community	.22
Family	.1
School	-.79
Individual/Peer	1.9

Table AD.3
Alcohol & Drug Abuse Risk
Composite Indicator
3 Year Average Composite Rate

Exhibit AD.2
County Comparison of
Three-Year Average Rates
1997-1999



Community Domain

Unemployment

Indicator 1.1

Section I:
Community
Domain

Social/
Economic
Stability

Table 1.1.1

Total Unemployed, Total Labor Force and Annual Unemployment Rate

	1994	1995	1996	1997	1998	1999
Total Unemployed	1430	1300	1190	1030	1000	860
Total Labor Force	10,100	9820	9930	9910	9730	9470
Annual Rate	14.2	13.2	12.0	10.4	10.3	9.1

Table 1.1.2 1997-1999 Comparisons Three Year Average Rates	
Plumas	9.9
California	5.8
County Cluster Rural "H"	9.4
Statewide Ranking	39th

Exhibit 1.1
Annual Unemployment Rate
Unemployed Persons as a % of Total Labor Force

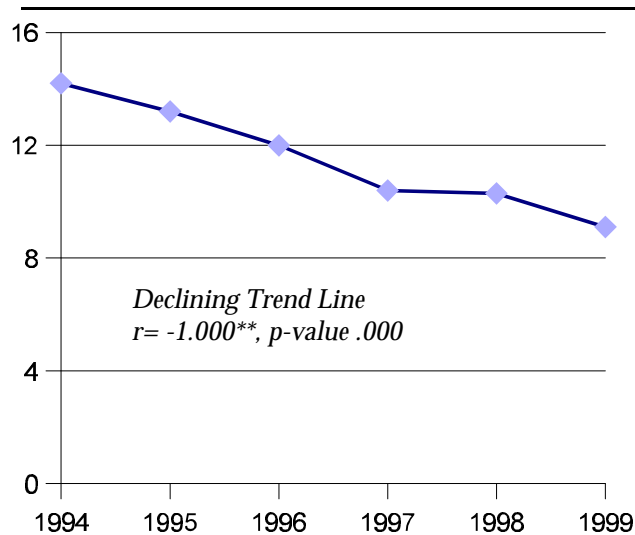


Table 4.3.3

Annual State & County Comparisons 1994-1999

	1994	1995	1996	1997	1998	1999
Plumas	14.2	13.2	12.0	10.4	10.3	9.1
California	8.6	7.8	7.2	6.3	5.9	5.2

Data Notes & Limitations

Rate calculations do not include estimates of discouraged workers who are no longer actively seeking employment, unemployed persons who fail to file for benefits, or persons who are underemployed.

Source:

CA Health and Welfare Agency,
Employment Development Department
Labor Market Information Division

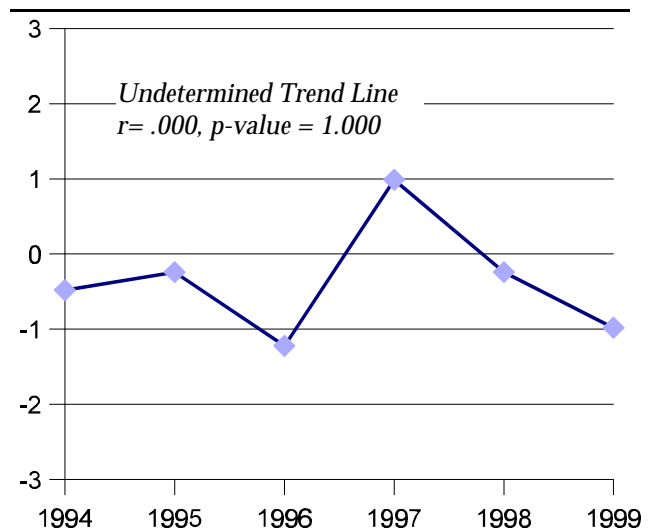
Population Growth

Indicator 1.2

Table 1.2.1
Population Growth per Annum (% Change per Year)

	1993-94	1994-95	1995-96	1996-97	1997-98	1998-99
Total Pop (Year ₁)	20,650	20,550	20,500	20,250	20,450	20,400
Total Pop (Year ₂)	20,550	20,500	20,250	20,450	20,400	20,200
% Change	-0.48	-0.24	-1.22	0.99	-0.24	-0.98

Exhibit 1.2
**Population Growth per Annum
(% Change per Year)**



Plumas	-0.1
California	1.7
County Cluster Rural "H"	-0.3
Statewide Ranking	9th

Table 1.2.3
**Annual State & County Comparisons
1994-1999**

	1994	1995	1996	1997	1998	1999
Plumas	-0.48	-0.24	-1.22	0.99	-0.24	-0.98
California	0.87	0.86	1.00	1.77	1.63	1.62

Source:
CA Department of Finance,
Demographic Research Unit

Data Notes & Limitations

The population growth rate measures the increase or decrease in total county population size over a one-year period; the rate does not account for differential rates of growth or decline across individual cities or communities.

Legal Foreign Immigration

Indicator 1.3

Section I:
Community
Domain

Social/
Economic
Stability

Table 1.3.1
Total Legal Immigrants and Immigration Rate per 1000 Population

	1993	1994	1995	1996	1997	1998
Total Immigrants	5	8	14	13	11	12
Total Population	20,650	20,550	20,500	20,250	20,450	20,400
Rate per 1000	0.2	0.4	0.7	0.6	0.5	0.6

Table 1.3.2 1997-1999 Comparisons Three Year Average Rates	
Plumas	0.6
California	5.8
County Cluster Rural "H"	0.7
Statewide Ranking	5th

Exhibit 1.3
Legal Foreign Immigration Rate
per 1000 Population

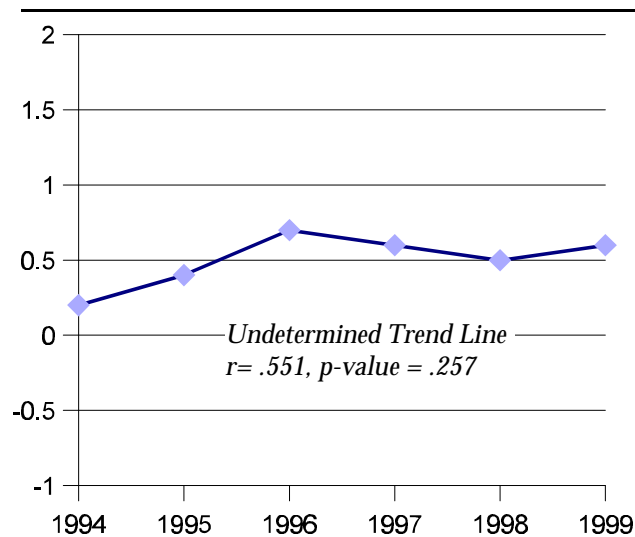


Table 1.3.3
Annual State & County Comparisons
1994-1999

	1993	1994	1995	1996	1997	1998
Plumas	0.2	0.4	0.7	0.6	0.5	0.6
California	7.8	6.5	5.2	6.2	6.1	5.1

Source:
CA Department of Finance,
Demographic Research Unit

Data Notes & Limitations

The legal foreign immigration rate does not include undocumented aliens, refugees seeking asylum who are waiting for approval of applications, or non-legal aliens approved for temporary residence.

The number of immigrants per county is based on intended destination of residence.

Reported Crimes

Indicator 1.4

Table 1.4.1
Reported Crimes and Rate per 1,000 Population

	1994	1995	1996	1997	1998	1999
Total Crimes	1694	1679	953	840	752	635
Total Population	21,000	20,500	20,200	20,500	20,400	20,200
Rate per 1,000	80.7	81.9	47.2	41.0	36.9	31.4

Exhibit 1.4
**Reported Crime Rate
per 1,000 Population**

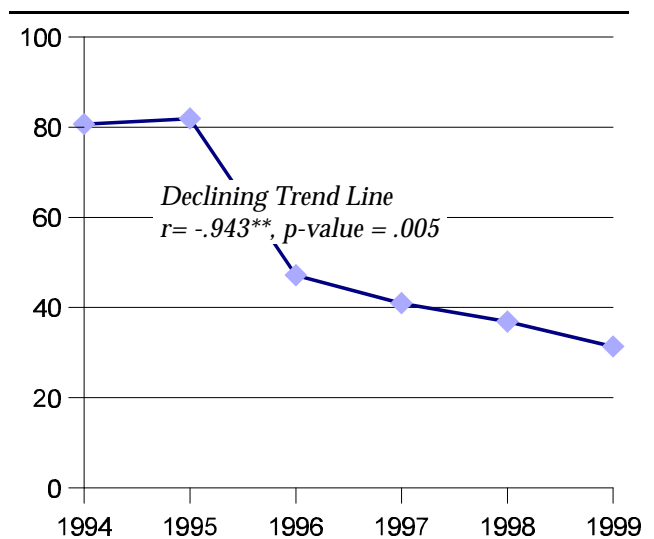


Table 1.4.2
**1997-1999 Comparisons
Three Year Average Rates**

Plumas	36.4
California	42.8
County Cluster Rural "H"	51.6
Statewide Ranking	26th

Table 1.4.3
**Annual State & County Comparisons
1994-1999**

	1994	1995	1996	1997	1998	1999
Plumas	80.7	81.9	47.2	41.0	36.9	31.4
California	61.0	58.0	51.7	48.1	42.8	37.5

Source:
CA Department of Justice,
Criminal Justice Statistics Center

Data Notes & Limitations

The crime rate documents the incidence of selected offenses including homicide, forcible rape, robbery, aggravated assault, burglary, larceny-theft, and motor vehicle theft.

The reported crime rate tends to understate the total level of criminal victimization due to lack of detection and under reporting among crime.

Retail Liquor Licenses

Indicator 1.5

Section I:
Community
Domain

Alcohol
Availability

Table 1.5.1
Total Retail Liquor Outlets per 100,000 Total Population

	1994	1995	1996	1997	1998	1999
Total Liquor Licenses	165	163	164	162	159	158
Total Population	20550	20500	20250	20450	20400	20200
Annual Rate	802.9	795.1	809.9	792.2	779.4	782.2

Table 1.5.2 1997-1999 Comparisons Three Year Average Rates	
Plumas	784.6
California	198.3
County Cluster Rural "H"	1023.4
Statewide Ranking	55th

Exhibit 1.5
Total Retail Liquor Outlets
per 100000 Total Population

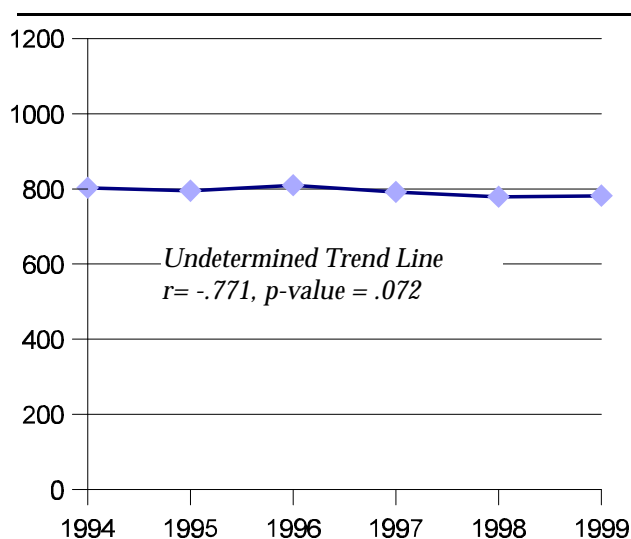


Table 1.5.3
Annual State & County Comparisons
1994-1999

	1994	1995	1996	1997	1998	1999
Plumas	802.9	795.1	809.9	792.2	779.4	782.2
California	357.4	234.3	205.9	201.7	198.5	194.7

Data Notes & Limitations

Selected retail establishments may be required to have multiple licenses (i.e. off-sale on-sale) so that the number of liquor licenses dispensed may exceed the actual number of retail outlets.

Source:

CA Alcoholic Beverage Control (ABC)

Adult Arrests for Drug Violations

Indicator 1.6

Table 1.6.1
**Adult Arrests for Drug Violations and Rate per 1,000
Population Ages 18-69**

	1994	1995	1996	1997	1998	1999
Total Arrests	60	55	58	75	69	71
Pop 18-69 Years	13,200	13,300	13,500	13,700	13,100	13,200
Rate per 1,000	4.5	4.1	4.3	5.5	5.3	5.4

Exhibit 1.8
**Adult Arrest Rate for Drug Violations
per 1,000 Population Ages 18-69**

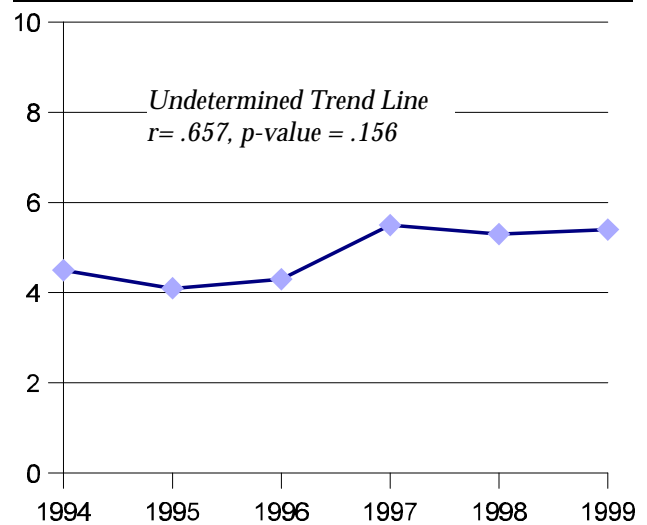


Table 1.8.2
**1997-1999 Comparisons
Three Year Average Rates**

Plumas	5.4
California	11.1
County Cluster Rural "H"	11.3
Statewide Ranking	7th

Table 1.8.3
**Annual State & County Comparisons
1994-1999**

	1994	1995	1996	1997	1998	1999
Plumas	4.5	4.1	4.3	5.5	5.3	5.4
California	11.8	11.0	10.7	11.6	11.2	10.6

Source:
CA Department of Justice,
Criminal Justice Statistics Center

Data Notes & Limitations

No adjustment is made for repeat offenders or arrests made on new charges while an arrestee is under an out-warrant.

The nature and volume of arrests may be influenced by changes in law enforcement legislation, police manpower, and patrol procedures, limiting the comparability of data over time and across jurisdictions.

Adult Arrests for Driving- Under-the-Influence

Indicator 1.7

Section I:
Community
Domain

Adult Alcohol
& Other Drug
Use

Table 1.7.1
**Adult Arrests for Driving-Under-the -Influence and Rate per 1,000
Population Ages 18-69**

	1994	1995	1996	1997	1998	1999
Total Arrests	202	181	243	244	268	248
Population 18-69	13,200	13,300	13,500	13,700	13,100	13,200
Rate per 1,000	15.3	13.6	18.0	17.8	20.5	18.8

Exhibit 1.7
**Adult DUI Arrest Rate
per 1,000 Population Ages 18-69**

Table 1.7.2 1997-1999 Comparisons Three Year Average Rates	
Plumas	19.0
California	8.7
County Cluster Rural "H"	17.0
Statewide Ranking	53rd

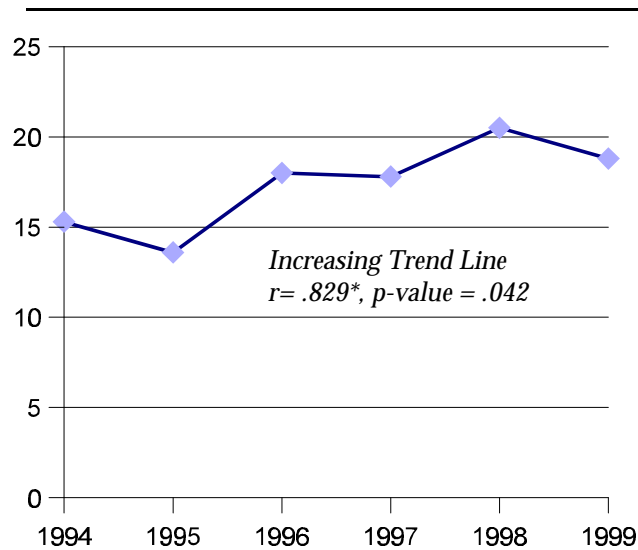


Table 1.7.3
**Annual State & County Comparisons
1994-1999**

	1994	1995	1996	1997	1998	1999
Plumas	15.3	13.6	18.0	17.8	20.5	18.8
California	9.8	9.3	9.3	8.7	8.8	8.6

Source:
CA Department of Justice,
Criminal Justice Statistics Center

Data Notes & Limitations

No adjustment is made for repeat offenders or arrests made on new charges while an arrestee is under an out-warrant.

The nature and volume of arrests may be influenced by changes in law enforcement legislation, police manpower, and patrol procedures, limiting the comparability of data.

Adult Arrests for Alcohol Violations

Indicator 1.8

Table 1.8.1

Adult Arrests for Alcohol Violations (Excluding DUI) and Rate per 1,000 Population Ages 18-69

	1994	1995	1996	1997	1998	1999
Total Arrests	197	234	303	285	259	254
Pop 18-69 Years	13,200	13,300	13,500	13,700	13,100	13,200
Rate per 1,000	14.9	17.6	22.4	20.8	19.8	19.2

Table 1.8.2 1997-1999 Comparisons Three Year Average Rates	
Plumas	19.9
California	6.2
County Cluster Rural "H"	11.1
Statewide Ranking	54th

Exhibit 1.8
Adult Arrest Rate for Alcohol Violations
per 1,000 Population Ages 18-69

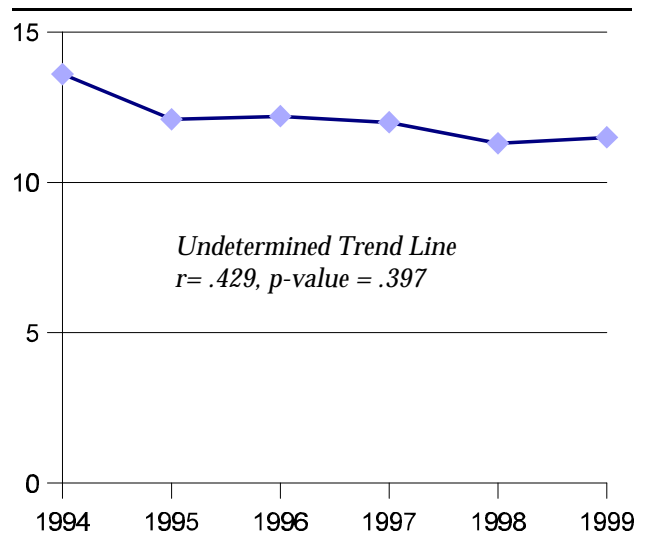


Table 1.8.3

Annual State & County Comparisons 1994-1999

	1994	1995	1996	1997	1998	1999
Plumas	14.9	17.6	22.4	20.8	19.8	19.2
California	5.8	6.0	6.6	6.0	6.4	6.3

Source:
CA Department of Justice,
Criminal Justice Statistics Center

Data Notes & Limitations

No adjustment is made for repeat offenders or arrests made on new charges while an arrestee is under an out-warrant.

The nature and volume of arrests may be influenced by changes in law enforcement legislation, police manpower, and patrol procedures, limiting the comparability of data over time and across jurisdictions.

Alcohol-Involved Motor Vehicle Accidents

Indicator 1.9

Section I:
Community
Domain

Adult Alcohol
& Other Drug
Use

Table 1.9.1
Alcohol-Involved Motor Vehicle Fatal and Injury Accidents and Rate per 100,000 Licensed Drivers

	1994	1995	1996	1997	1998	1999
Total Accidents	36	47	36	32	27	35
Licensed Drivers	16,500	15,600	16,500	16,600	16,600	16,573
Rate per 100,000	218.2	301.3	218.2	192.8	162.7	211.2

Exhibit 1.9
Alcohol-Involved Accident Rate per 100,000 Licensed Drivers

Table 1.9.2 1997-1999 Comparisons Three Year Average Rates	
Plumas	188.9
California	99.3
County Cluster Rural "H"	306.5
Statewide Ranking	52nd

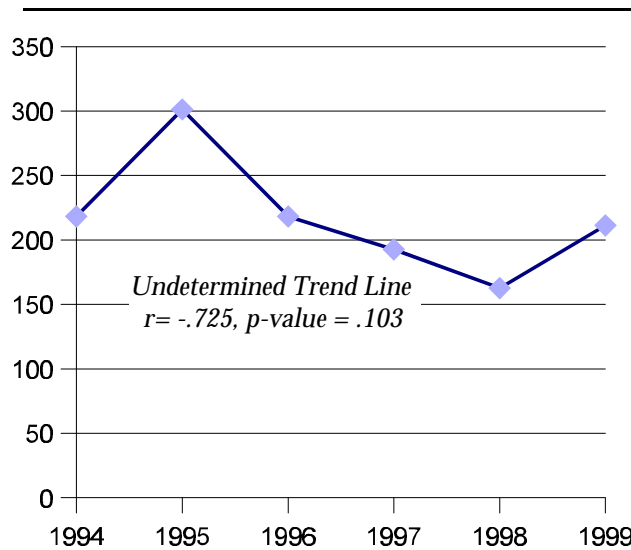


Table 1.9.3
Annual State & County Comparisons 1994-1999

	1994	1995	1996	1997	1998	1999
Plumas	218.2	301.3	218.2	192.8	162.7	211.2
California	129.6	128.2	116.3	102.0	99.9	96.0

Data Notes & Limitations

Rates are estimated based on fatal and injury accidents only, excluding all accidents classified as Property Damage Only (PDO).

Rates may underestimate actual occurrence due to under reporting.

Source:
California Highway Patrol (CHP),
Statewide Integrated Traffic Safety Unit (SWITRs)

Adult Alcohol & Drug Treatment Admissions

Indicator 1.10

Table 1.10.1
**Treatment Admissions and Rate per 1,000 Population
18 Years and Over**

	1994	1995	1996	1997	1998	1999
Treatment Admissions	223	193	176	209	196	237
Pop 18 Years and Over	15,168	15,118	14,914	15,649	15,682	15,595
Rate per 1,000	14.7	12.8	11.8	13.4	12.5	15.2

Exhibit 1.10
**Adult Treatment Admission Rate
per 1,000 Population 18 Years and Over**

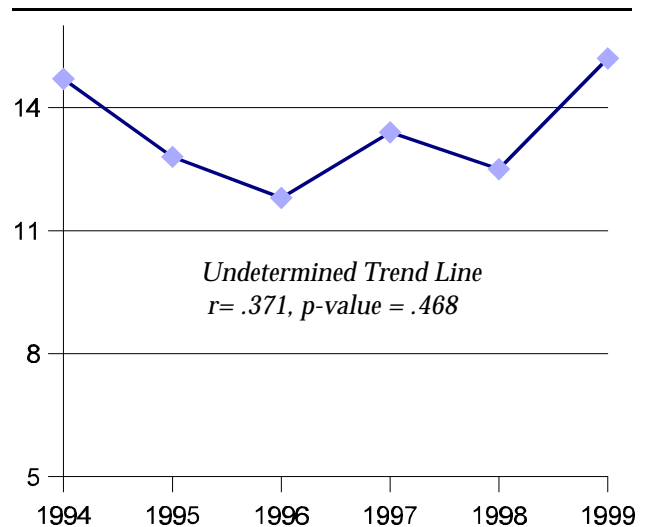


Table 1.10.2
**1997-1999 Comparisons
Three Year Average Rates**

Plumas	13.7
California	8.7
County Cluster Rural "H"	11.2
Statewide Ranking	48th

Table 1.10.3
**Annual State & County Comparisons
1994-1999**

	1994	1995	1996	1997	1998	1999
Plumas	14.7	12.8	11.8	13.4	12.5	15.2
California	9.3	5.3	8.9	8.4	8.6	9.1

Source:
CA Health and Human Services Agency,
CA Department of Alcohol and Drug Programs

Data Notes & Limitations

Admission rates do not account for the utilization of services provided outside of the publicly-funded alcohol and drug treatment and recovery system.

Admission rates are directly linked to program capacity and treatment demand, and are consequently, less useful as measures of overall prevalence of substance abuse in the general population.

Hospital Discharges for Alcohol & Drug Disorders

Indicator 1.11

Section I:
Community
Domain

Adult Alcohol
& Other Drug
Use

Table 1.11.1
Hospital Discharges for Alcohol & Drug Related Causes and Rate per 100,000 Population

	1994	1995	1996	1997	1998
Total Discharges	19	19	23	24	24
Total Population	20,550	20,500	20,250	20,450	20,400
Rate per 100,000	92.5	92.7	113.6	117.4	117.6

Exhibit 1.11
Hospital Discharges for Alcohol & Drug Disorders and Rate per 100,000 Population

Table 1.11.2 1996-1998 Comparisons Three Year Average Rates	
Plumas	116.2
California	168.8
County Cluster Rural "H"	50.4
Statewide Ranking	31st

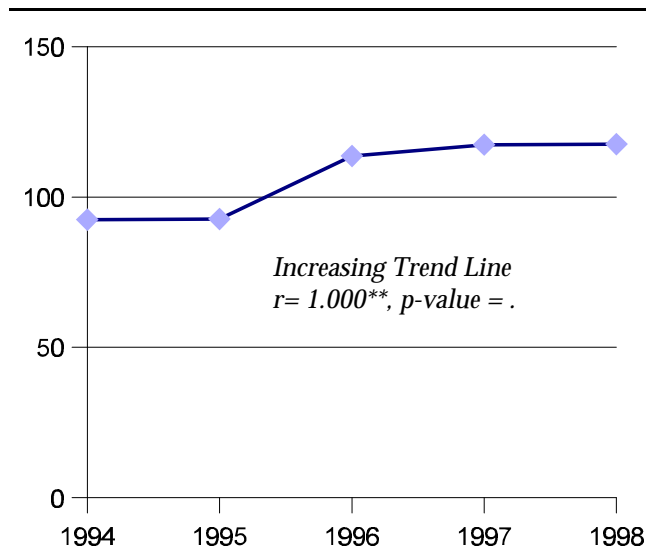


Table 1.11.3
Annual State & County Comparisons 1994-1998

	1994	1995	1996	1997	1998
Plumas	92.5	92.7	113.6	117.4	117.6
California	168.8	170.7	173.1	168.9	164.4

Data Notes & Limitations

Hospital discharge rates only include discharges for diagnoses directly attributable to alcohol and drug use. The measure excludes cases where the onset of disease may partially attributable to substance use behaviors.

Source:
CA Health & Welfare Agency,
Department of Alcohol & Drug Programs

AIDS Incidence

Indicator 1.12

Table 1.12.1
**Total Number of AIDS Cases
and Rate per 100,000 Population**

	1994	1995	1996	1997	1998	1999
Total AIDS Cases	1	1	1	1	1	0
Total Population	20,550	20,500	20,250	20,450	20,400	20,200
Rate per 100,000	4.9	4.9	4.9	4.9	4.9	0.0

Exhibit 1.12
**Total Number of AIDS Cases
and Rate per 100,000 Population**

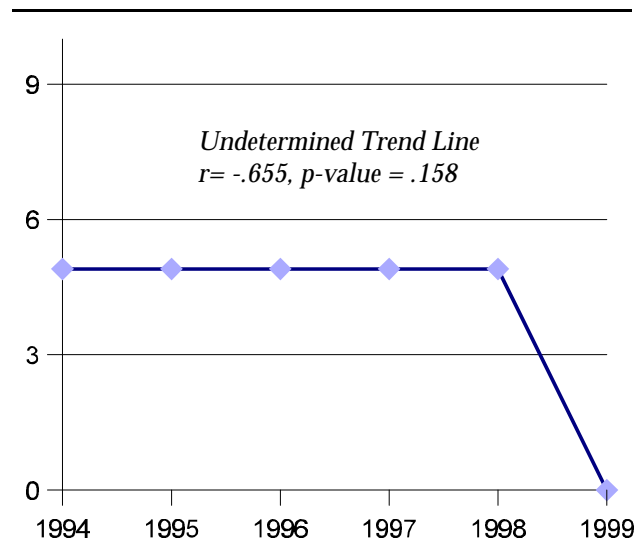


Table 1.12.2
**1997-1999 Comparisons
Three Year Average Rates**

Plumas	3.3
California	13.6
County Cluster Rural "H"	3.6
Statewide Ranking	14th

Table 1.12.3
**Annual State & County Comparisons
1994-1999**

	1994	1995	1996	1997	1998	1999
Plumas	4.9	4.9	4.9	4.9	4.9	0.0
California	32.5	29.2	22.3	16.3	12.6	11.9

Source:
CA Health & Welfare Agency,
Department of Health Services,
Office of AIDS

Data Notes & Limitations

Data was not available for counties with fewer than two reported cases; to allow for rate calculations, a value of one has been substituted for counties with unavailable data.

The number of reported AIDS cases represents the total number of cases caused by both intravenous drug use and other modes of transmission.

Deaths Due to Alcohol & Drug Use

Indicator 1.13

Section I:
Community
Domain

Adult Alcohol
& Other Drug
Use

Table 1.13.1

Deaths Due to Alcohol & Drug Use and Rate per 100,000 Population

	1994	1995	1996	1997	1998
Total Deaths	17	15	18	11	10
Total Population	20,550	20,500	20,250	20,450	20,400
Rate per 100,000	82.7	73.2	88.9	53.8	49.0

Exhibit 1.13
Deaths Due to Alcohol & Drug Use and Rate per 100,000 Population

Table 1.13.2 1997-1999 Comparisons Three Year Average Rates	
Plumas	63.9
California	45.6
County Cluster Rural "H"	44.0
Statewide Ranking	49th

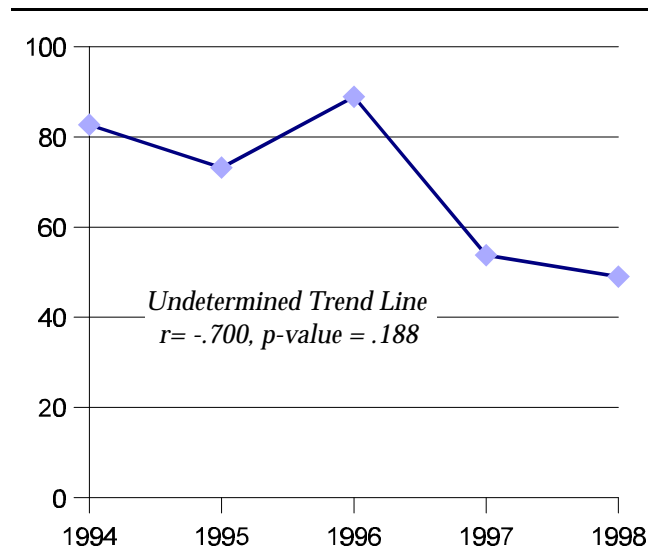


Table 1.13.3

Annual State & County Comparisons 1994-1999

	1994	1995	1996	1997	1998
Plumas	82.7	73.2	88.9	53.8	49.0
California	50.5	50.9	48.6	45.0	43.2

Data Notes & Limitations

Mortality rates are often subject to a high degree of variability due to the small number of events used to calculate rates. It is important to use caution when interpreting trends over time and comparisons across small geographic areas.

Source:

CA Health & Welfare Agency,
Department of Alcohol & Drug Programs

Family Domain

Temporary Aid to Needy Families

Indicator 2.1

Section II:
Family
Domain

Family Risk

Table 2.1.1

Total TANF Recipients and % of Total Population Receiving Assistance

	1994	1995	1996	1997	1998	1999
Total Recipients	1189	1283	1226	1051	180	670
Total Population	20,550	20,500	20,250	20,450	20,400	20,200
% of Population	5.8	6.3	6.1	5.1	0.9	3.3

Exhibit 2.1
Total TANF Recipients as a % of
Total Population

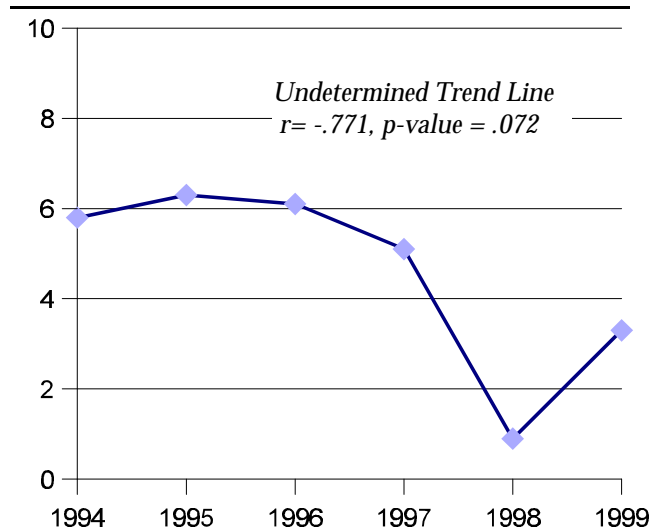


Table 2.1.2
1996, 1998-1999 Comparisons
Three Year Average Rates

Plumas	3.1
California	4.5
County Cluster Rural "H"	3.6
Statewide Ranking	21st

Table 2.1.3

Annual State & County Comparisons 1994-1999

	1994	1995	1996	1997	1998	1999
Plumas	5.8	6.3	6.1	5.1	0.9	3.3
California	8.6	8.5	8.2	6.9	1.4	5.1

Source:

CA Health & Welfare Agency,
Department of Social Services,
Statistical Services Bureau

Data Notes & Limitations

The Temporary Assistance to Needy Families (TANF) program replaces the former Aid to Families with Dependent Children (AFDC) cash assistance program. Caseload data prior to 1997 is not comparable to current figures.

The number of persons receiving TANF benefits is estimated using a one-month sample caseload; caseloads may vary from month-to-month within the reporting year.

Domestic Violence

Indicator 2.2

Table 2.2.1
**Domestic Violence Calls for Assistance and Rate per 100,000 Population
Ages 18-69 Years**

	1994	1995	1996	1997	1998	1999
Domestic Violence Calls	138	151	156	134	115	100
Pop 18-69 Years	13,200	13,300	13,500	13,700	13,100	13,200
Rate per 100,000	10.5	11.4	11.6	9.8	8.8	7.6

Exhibit 2.2
**Domestic Violence Calls per 100,000
Population 18-69 Years**

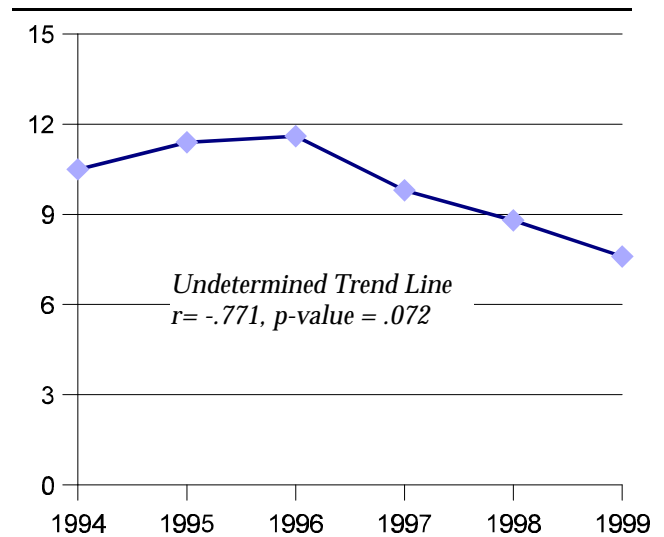


Table 2.2.2
**1997-1999 Comparisons
Three Year Average Rates**

Plumas	8.7
California	9.2
County Cluster Rural "H"	6.7
Statewide Ranking	29th

Table 2.2.3
**Annual State & County Comparisons
1994-1999**

	1994	1995	1996	1997	1998	1999
Plumas	10.5	11.4	11.6	9.8	8.8	7.6
California	11.8	2.6	10.4	10.0	9.2	8.5

Source:
CA Department of Justice,
Criminal Justice Statistics Center

Data Notes & Limitations

Domestic violence calls for assistance may underestimate the actual incidence of family violence due to widespread under reporting.

No adjustment is made for repeated incidents.

Table 2.3.1
**Emergency Response Dispositions per 1000
Population Under 18 Years**

	1994	1995	1996	1997	1998	1999
Emergency Response Dispositions	720	625	521	•	776	603
Pop < 18 Years	5382	5382	5336	•	4718	4605
Rate per 1000	133.8	116.1	97.6	•	164.5	130.9

• Data not available for 1997 due to changes in reporting procedures

Exhibit 2.3
**Emergency Response Disposition
Rate per 1000 Population Under 18 Years**

Table 2.3.2 1996, 1998-1999 Comparisons Three Year Average Rates	
Plumas	131.0
California	64.6
County Cluster Rural "H"	114.4
Statewide Ranking	47th

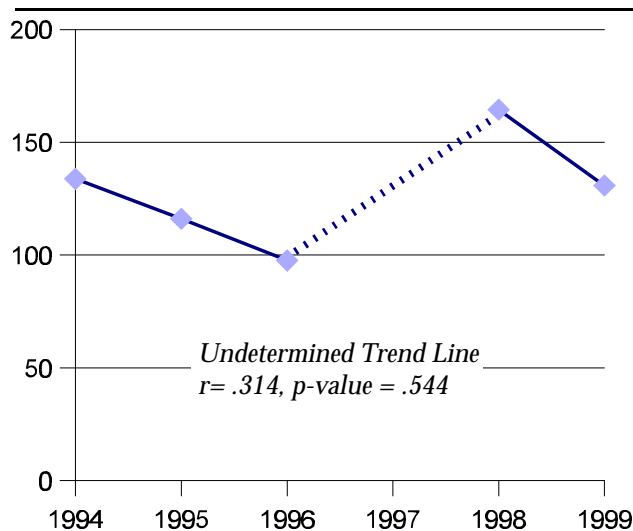


Table 2.3.3
**Annual State & County Comparisons
1994-1999**

	1994	1995	1996	1997	1998	1999
Plumas	133.8	116.1	97.6	•	164.5	130.9
California	74.5	75.1	74.8	•	57.2	61.8

Data Notes & Limitations

The number of dispositions does not include child abuse referrals where information is insufficient and cases can not be substantiated.

No adjustment is made for the repeated incidence of child abuse or neglect within a single family (i.e., multiple reports within a given year).

Source:
CA Health & Welfare Agency,
Department of Social Services,
Statistical Services Bureau

Children in Foster Care

Indicator 2.4

Table 2.4.1
Foster Care Placements and Rate per 1000 Population Under 18 Years

	1994	1995	1996	1997	1998	1999
Foster Care Placements	36	34	38	40	38	37
Pop < 18 Years	5382	5382	5336	4801	4718	4605
Rate per 1000	6.7	6.3	7.1	8.3	8.1	8.0

Exhibit 2.4
Foster Care Placements per 1000 Population Under 18 Years

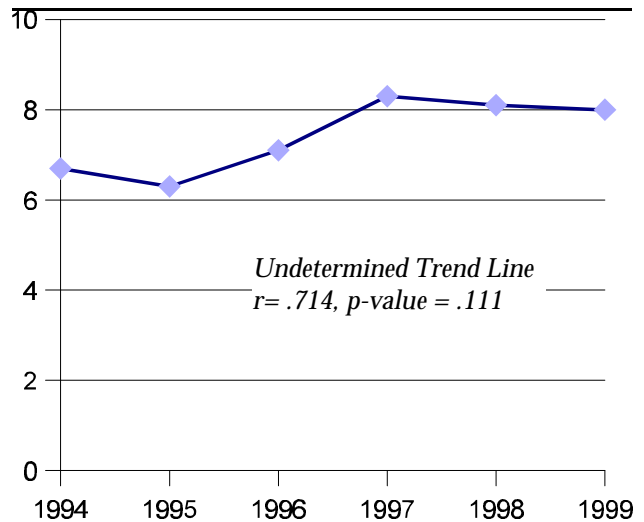


Table 2.4.2
1997-1999 Comparisons Three Year Average Rates

Plumas	8.1
California	8.6
County Cluster Rural "H"	16.0
Statewide Ranking	30th

Table 2.4.3
Annual State & County Comparisons 1994-1999

	1994	1995	1996	1997	1998	1999
Plumas	6.7	6.3	7.1	8.3	8.1	8.0
California	7.6	7.7	7.7	8.4	8.9	8.5

Source:
CA Health & Welfare Agency,
Department of Social Services,
Statistical Services Bureau

Data Notes & Limitations

The percentage of children living in foster care is estimated using a one-month sample foster care caseload (i.e., point-prevalence) of children living in foster family and group home placements.

School Domain

School Dropouts

Indicator 3.1

Section III:
School
Domain

Academic Risk

Table 3.1.1
Annual High School Dropouts and Rate per 100 Students Enrolled in Grades 9-12

	1994	1995	1996	1997	1998	1999
Total Dropouts	28	24	26	25	16	28
Student Enrollment	1237	1203	1131	1182	1165	1201
Dropout Rate	2.3	2.0	2.3	2.1	1.4	2.3

Exhibit 3.1
Annual High School Dropout Rate per 100 Student Enrolled Grades 9-12

Table 3.1.2 1997-1999 Comparisons Three Year Average Rates	
Plumas	1.9
California	3.0
County Cluster Rural "H"	1.7
Statewide Ranking	18th

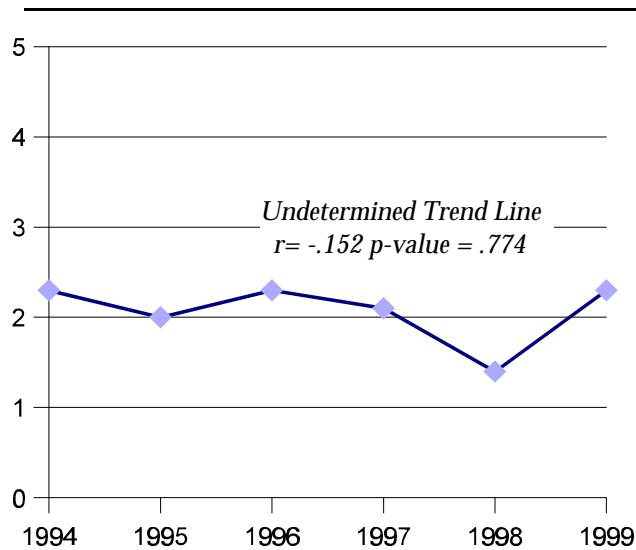


Table 3.1.3
Annual State & County Comparisons 1994-1999

	1994	1995	1996	1997	1998	1999
Plumas	2.3	2.0	2.3	2.1	1.4	2.3
California	4.8	4.6	3.9	3.3	2.9	2.8

Data Notes & Limitations

Enrollment data for small student populations may vary widely from year to year. It is important to use caution when interpreting trends and comparisons across student populations.

Source:
CA Department of Education,
California Basic Educational Demographics (CBEDS)

School Alcohol & Drug-Related Incidents

Table 3.2.1
School Alcohol & Drug-Related Incidents and Rate per 1,000 Enrolled Students

	1996-97	1997-98	1998-99
Total Incidents	5	9	16
Total Enrolled	3705	3630	3540
Rate per 1,000	1.3	2.5	4.5

Exhibit 3.2
School Alcohol & Drug Incident Rate per 1,000 Population

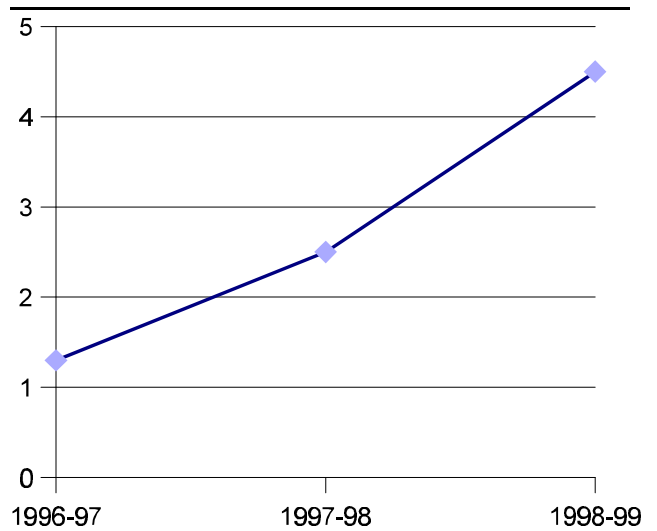


Table 3.2.2
**1996-97-1998-99 Comparisons
Three Year Average Rates**

Plumas	2.8
California	3.7
County Cluster Rural "H"	4.9
Statewide Ranking	8th

Table 3.2.3
**Annual State & County Comparisons
1996-1999**

	1996-97	1997-98	1998-99
Plumas	1.3	2.5	4.5
California	3.5	3.6	3.9

Source:
CA Department of Education,
California Safe Schools Assessment (CSSA)

Data Notes & Limitations

The total number of school-based alcohol and drug incidents may be influenced by variations in enforcement and reporting, limiting the comparability of data over time and across districts.

School Violence Incidents

Indicator 3.3

Section III:
School
Domain

Risk Behavior

Table 3.3.1
School Violence Incidents and Rate per 1,000 Students Enrolled

	1996-97	1997-98	1998-99
Total Incidents	5	10	13
Total Enrolled	3705	3630	3540
Rate per 1,000	1.3	2.8	3.7

Exhibit 3.3
**School Violence Incident Rate
per 1,000 Population**

Table 3.3.2 1997-1999 Comparisons Three Year Average Rates	
Plumas	2.6
California	5.1
County Cluster Rural "H"	9.1
Statewide Ranking	4th

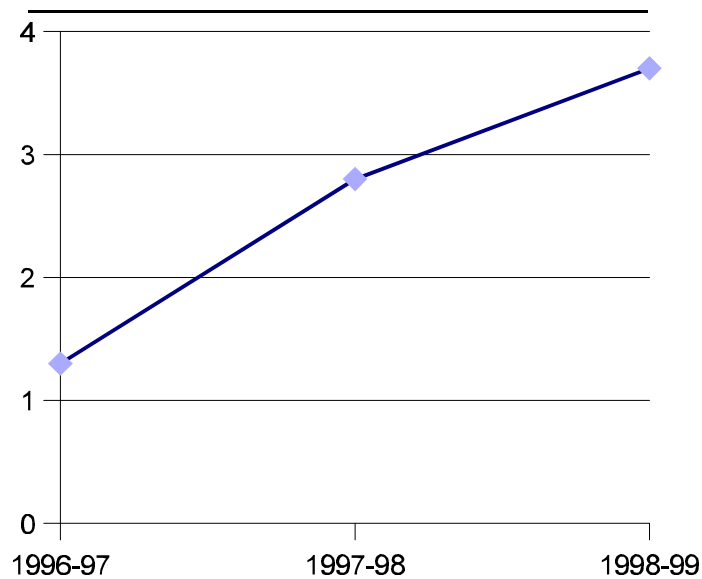


Table 3.3.3
**Annual State & County Comparisons
1996-1999**

	1996-97	1997-98	1998-99
Plumas	1.3	2.8	3.7
California	5.0	5.0	5.3

Data Notes & Limitations

The total number of school-based violent crime incidents may be influenced by variations in enforcement and reporting, limiting the comparability of data over time and across districts.

Source:
CA Department of Education,
California Safe Schools Assessment (CSSA)

Individual/Peer Domain

Juvenile Arrests for Alcohol and Drug Offenses

Indicator 4.1

Section IV:
Individual
Domain

Alcohol &
Drug Use

Table 4.1.1

Juvenile Arrests for Alcohol and Drug Offenses and Rate per 1,000 Population Ages 10-17

	1994	1995	1996	1997	1998	1999
Total Arrests for AOD Offenses	14	24	9	17	63	83
Pop 10-17 Years	2600	2600	2600	2700	2400	2400
Rate per 1,000	5.4	9.2	3.5	6.3	26.3	34.6

Exhibit 4.1
Juvenile Alcohol and Drug Arrest
Rate per 1,000 Population 10-17 Years

Table 4.1.2 1997-1999 Comparisons Three Year Average Rates	
Plumas	22.4
California	10.2
County Cluster Rural "G"	25.1
Statewide Ranking	54th

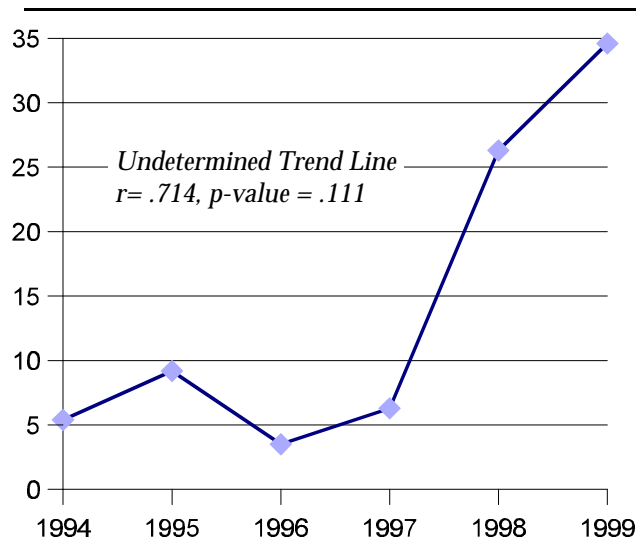


Table 4.1.3

Annual State & County Comparisons 1994-1999

	1994	1995	1996	1997	1998	1999
Plumas	5.4	9.2	3.5	6.3	26.3	34.6
California	9.3	10.1	10.3	10.2	10.4	10.0

Source:

CA Department of Justice,
Criminal Justice Statistics Center

Data Notes & Limitations

No adjustment is made for repeat offenders or arrests made on new charges while an arrestee is under an out-warrant.

The nature and volume of arrests may be influenced by changes in law enforcement legislation, police manpower, and patrol procedures, limiting the comparability of data over time and across jurisdictions.

Adolescent Admissions to Alcohol and Drug Treatment

Indicator 4.2

Table 4.2.1
Adolescent Treatment Admissions and Rate per 1,000 Population Under 18 Years

	1994	1995	1996	1997	1998	1999
Treatment Admissions	61	40	62	87	63	71
Pop < 18 Years	5382	5382	5336	4801	4718	4605
Rate per 1,000	11.3	7.4	11.6	18.1	13.4	15.4

Exhibit 4.2
Treatment Admission Rate per 1,000 Youth Under 18 Years

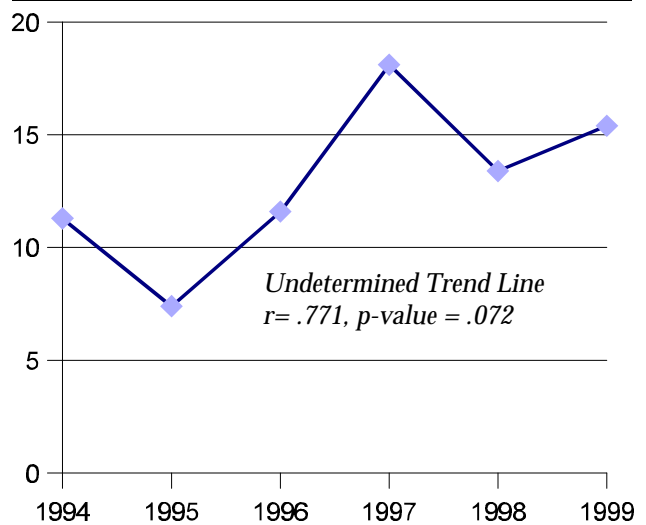


Table 4.2.2
**1997-1999 Comparisons
Three Year Average Rates**

Plumas	15.6
California	1.2
County Cluster Rural "H"	5.9
Statewide Ranking	58th

Table 4.2.3
**Annual State & County Comparisons
1994-1999**

	1994	1995	1996	1997	1998	1999
Plumas	11.3	7.4	11.6	18.1	13.4	15.4
California	1.1	1.2	1.1	1.1	1.2	1.3

Source:
CA Health and Human Services Agency,
CA Department of Alcohol and Drug Programs

Data Notes & Limitations

Admission rates do not account for the utilization of services provided outside of the publicly-funded alcohol and drug treatment and recovery system.

Admission rates are directly linked to program capacity and treatment demand, and are consequently, less useful as measures of overall prevalence of substance abuse in the general population.

Table 4.3.1
**Law Enforcement Dispositions for All Offenses and Rate per 100,000
Population Ages 10-17**

	1994	1995	1996	1997	1998	1999
Law Enforcement Dispositions	238	181	56	253	399	439
Pop 10-17 Years	2600	2600	2600	2700	2400	2400
Rate per 100,000	91.5	69.6	21.5	93.7	166.3	182.9

Table 4.3.2 1997-1999 Comparisons Three Year Average Rates	
Plumas	147.6
California	70.3
County Cluster Rural "H"	88.9
Statewide Ranking	57th

Exhibit 4.3
**Law Enforcement Disposition Rate per 100,000
Population 10-17 Years**

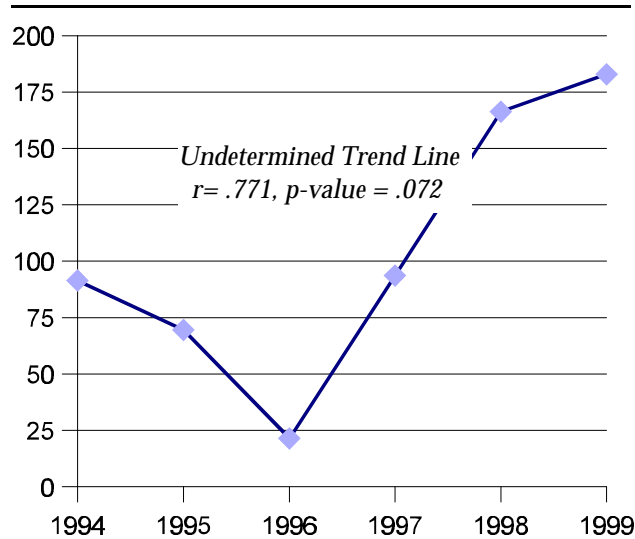


Table 4.3.3
**Annual State & County Comparisons
1994-1999**

	1994	1995	1996	1997	1998	1999
Plumas	91.5	69.6	21.5	93.7	166.3	182.9
California	73.5	68.3	73.6	72.4	72.6	68.4

Data Notes & Limitations

No adjustment is made for repeat offenders or arrests made on new charges while an arrestee is under an out-warrant.

The nature and volume of arrests may be influenced by changes in law enforcement legislation, police manpower, and patrol procedures, limiting the comparability of data over time and across jurisdictions.

Source:
CA Department of Justice, Law Enforcement Information Center

Youth Runaways

Indicator 4.4

Table 4.4.1
**Reported Runaways and Rate per 1,000 Population
18 Years and Under**

	1994	1995	1996	1997	1998	1999
Reported Runaways	75	63	76	77	40	50
Pop < 18 Years	5382	5382	5336	4801	4718	4605
Rate per 1,000	13.9	11.7	14.2	16.0	8.5	10.9

Exhibit 4.2
**Reported Runaway Rate per 100,000
Youth Under Age 18**

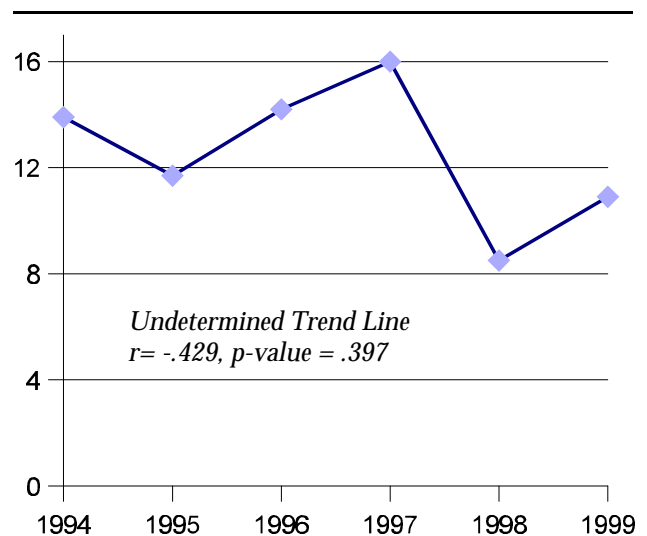


Table 4.4.2
**1997-1999 Comparisons
Three Year Average Rates**

Plumas	11.8
California	11.2
County Cluster Rural "H"	11.0
Statewide Ranking	25th

Table 4.4.3
**Annual State & County Comparisons
1994-1999**

	1994	1995	1996	1997	1998	1999
Plumas	13.9	11.7	14.2	16.0	8.5	10.9
California	13.3	12.7	12.3	12.4	11.1	10.0

Source:
CA Department of Justice, Law Enforcement Information
Center, Missing and Unidentified Persons Unit (MUPS)

Data Notes & Limitations

The reported runaway rate is likely to understate actual incidence due to cases in which no missing persons report is filed with law enforcement agencies; no adjustment is made for habitual runaways.

Births to Teen Mothers

Indicator 4.5

Section IV:
Individual
Domain

AOD Risk &
Consequences

Table 4.5.1
**Births to Teen and Rate per 1000 Female
Population Ages 15-19**

	1994	1995	1996	1997	1998	1999
Teen Births	17	31	24	15	20	15
Pop 15-19 Years	707	752	776	786	791	791
Rate per 1,000	24.0	41.2	30.9	19.1	25.3	19.0

Exhibit 4.5
**Teen Birth Rate per 1000
Population 15-19 Years**

Table 4.5.2 1997-1999 Comparisons Three Year Average Rates	
Plumas	21.1
California	53.4
County Cluster Rural "H"	24.3
Statewide Ranking	3rd

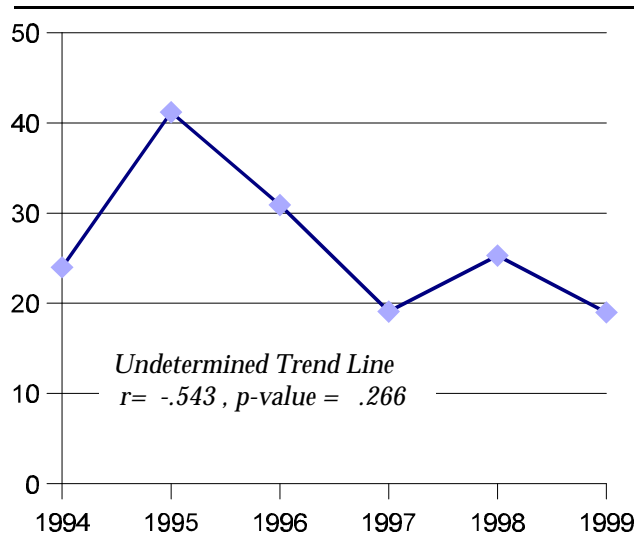


Table 4.5.3
**Annual State & County Comparisons
1994-1999**

	1994	1995	1996	1997	1998	1999
Plumas	24.0	41.2	30.9	19.1	25.3	19.0
California	70.0	67.2	61.6	56.7	53.2	50.2

Data Notes & Limitations

The teen birth rate measures the number of females ages 15-19 who carry a pregnancy to term; the rate does not reflect the overall incidence of pregnancy in the adolescent female population.

Source:
CA Department of Health Services,
Vital Statistics Section

Adolescent Suicides

Indicator 4.6

Table 4.6.1
Adolescent Suicides and Rate per 100,000 Population Under 18 Years

	1993	1994	1995	1996	1997	1998
Adolescent Suicides	0	0	0	0	1	0
Pop < 18 Years	5394	5382	5382	5336	4801	4718
Rate per 100,000	0.0	0.0	0.0	0.0	20.8	0.0

Exhibit 4.6
Adolescent Suicide Rate per 100,000 Youth Under 18 Years

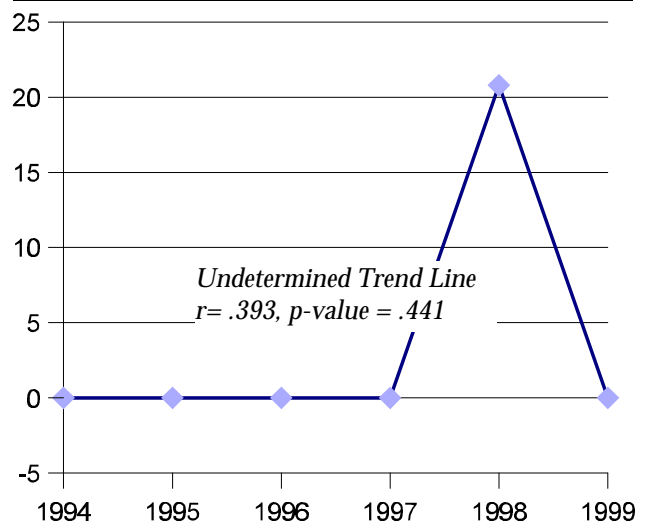


Table 4.6.2
1996-1998 Comparisons Three Year Average Rates

Plumas	6.9
California	1.1
County Cluster Rural "H"	1.4
Statewide Ranking	58th

Table 4.6.3
Annual State & County Comparisons 1993-1998

	1993	1994	1995	1996	1997	1998
Plumas	0.0	0.0	0.0	0.0	20.8	0.0
California	2.1	1.6	1.3	1.2	1.0	1.0

Source:
CA Department of Health Services, Vital Statistics Section

Data Notes & Limitations

The suicide rate is subject to a high degree of variability due to the small number of events used to calculate rates. It is important to use caution when interpreting data trends and comparisons across small geographic areas.

State & County Data Comparisons

Table S.1
County Rankings by Indicator for All California Counties
 Three-Year Average Rates

	<i>Community Domain</i>												
	C1.1	C1.2	C1.3	C1.4	C1.5	C1.6	C1.7	C1.8	C1.9	C1.10	C1.11	C1.12	C1.13
Alameda	10th	49th	53rd	54th	13th	46th	3rd	35th	9th	33rd	51st	56th	19th
Alpine	41st	4th	4th	58th	58th	58th	57th	31st	58th	1st	1st	1st	1st
Amador	18th	18th	10th	3rd	48th	24th	11th	18th	48th	3rd	23rd	34th	41st
Butte	29th	17th	22nd	37th	24th	13th	18th	21st	25th	16th	37th	24th	47th
Calaveras	31st	30th	2nd	20th	43rd	20th	33rd	6th	55th	52nd	8th	2nd	45th
Colusa	57th	21st	58th	8th	45th	57th	58th	46th	50th	19th	9th	4th	10th
Contra Costa	7th	50th	36th	43rd	8th	23rd	6th	4th	2nd	50th	55th	41st	11th
Del Norte	37th	10th	14th	33rd	41st	18th	46th	56th	53rd	6th	36th	16th	57th
El Dorado	14th	44th	19th	5th	38th	11th	24th	19th	33rd	45th	24th	12th	36th
Fresno	53rd	25th	43rd	57th	20th	43rd	36th	42nd	34th	42nd	39th	36th	22nd
Glenn	48th	11th	40th	24th	39th	22nd	49th	41st	30th	27th	3rd	10th	23rd
Humboldt	24th	12th	13th	47th	40th	32nd	48th	52nd	42nd	46th	45th	27th	52nd
Imperial	58th	24th	56th	49th	25th	56th	54th	15th	37th	31st	20th	8th	27th
Inyo	25th	5th	15th	23rd	53rd	36th	55th	58th	41st	11th	18th	7th	55th
Kern	46th	39th	28th	46th	21st	53rd	26th	12th	22nd	35th	33rd	49th	38th
Kings	52nd	56th	31st	22nd	9th	31st	43rd	51st	24th	8th	10th	50th	16th
Lake	36th	13th	21st	38th	42nd	48th	52nd	57th	47th	21st	22nd	47th	58th
Lassen	35th	19th	8th	2nd	28th	1st	19th	22nd	23rd	41st	2nd	52nd	15th
Los Angeles	22nd	33rd	48th	34th	1st	35th	5th	3rd	14th	25th	53rd	55th	18th
Madera	49th	47th	29th	41st	22nd	6th	25th	43rd	45th	29th	5th	31st	32nd
Marin	2nd	23rd	30th	9th	34th	5th	12th	26th	4th	10th	49th	57th	28th
Mariposa	32nd	8th	6th	25th	47th	9th	13th	32nd	44th	47th	4th	20th	51st
Mendocino	27th	15th	26th	17th	46th	47th	42nd	45th	49th	43rd	30th	32nd	54th
Merced	54th	37th	47th	48th	15th	41st	47th	39th	36th	23rd	17th	17th	21st
Modoc	43rd	2nd	11th	1st	52nd	15th	35th	2nd	46th	39th	6th	15th	30th
Mono	33rd	22nd	23rd	51st	57th	4th	41st	25th	54th	49th	15th	13th	9th
Monterey	42nd	55th	49th	28th	33rd	19th	39th	34th	10th	12th	27th	45th	13th
Napa	12th	38th	45th	16th	50th	12th	38th	20th	35th	15th	58th	21st	40th
Nevada	16th	29th	9th	12th	36th	8th	32nd	24th	29th	5th	21st	26th	43rd
Orange	3rd	51st	50th	14th	5th	27th	9th	11th	5th	14th	50th	40th	4th
Placer	9th	57th	17th	21st	29th	17th	30th	27th	16th	32nd	57th	3rd	12th
Plumas	49th	9th	5th	26th	55th	7th	53rd	54th	52nd	48th	31st	14th	49th
Riverside	23rd	54th	27th	40th	6th	38th	16th	36th	19th	17th	54th	51st	31st

	<i>Community Domain</i>												
	C1.1	C1.2	C1.3	C1.4	C1.5	C1.6	C1.7	C1.8	C1.9	C1.10	C1.11	C1.12	C1.13
Sacramento	15th	52nd	37th	53rd	11th	39th	15th	1st	18th	13th	42nd	48th	34th
San Benito	38th	58th	46th	19th	23rd	2nd	31st	13th	38th	2nd	7th	18th	5th
San Bernardino	20th	43rd	24th	42nd	2nd	49th	20th	10th	20th	18th	52nd	37th	26th
San Diego	8th	53rd	42nd	30th	3rd	40th	8th	9th	17th	26th	46th	53rd	14th
San Francisco	6th	27th	57th	56th	49th	55th	1st	16th	6th	58th	43rd	58th	53rd
San Joaquin	40th	46th	39th	52nd	12th	34th	27th	14th	31st	54th	35th	43rd	39th
San Luis Obispo	11th	36th	18th	13th	37th	21st	34th	37th	15th	4th	26th	35th	29th
San Mateo	1st	35th	54th	11th	17th	10th	7th	8th	1st	34th	40th	38th	7th
Santa Barbara	13th	28th	35th	15th	27th	28th	28th	48th	8th	28th	47th	23rd	24th
Santa Clara	4th	40th	55th	18th	10th	30th	4th	23rd	3rd	24th	32nd	39th	3rd
Santa Cruz	26th	31st	41st	32nd	26th	44th	37th	55th	21st	37th	29th	44th	17th
Shasta	34th	16th	3rd	39th	35th	50th	29th	40th	43rd	36th	56th	6th	50th
Sierra	44th	1st	12th	4th	56th	26th	51st	49th	57th	44th	19th	46th	2nd
Siskiyou	45th	7th	16th	10th	51st	14th	44th	50th	39th	40th	12th	9th	44th
Solano	19th	48th	32nd	44th	4th	29th	2nd	17th	7th	9th	16th	54th	6th
Sonoma	5th	45th	25th	27th	30th	25th	22nd	29th	27th	55th	34th	42nd	37th
Stanislaus	47th	41st	44th	55th	14th	45th	14th	30th	28th	20th	38th	33rd	35th
Sutter	55th	32nd	52nd	31st	16th	33rd	50th	44th	13th	53rd	44th	29th	25th
Tehama	30th	14th	20th	35th	32nd	16th	40th	38th	40th	56th	11th	5th	46th
Trinity	51st	3rd	1st	6th	54th	54th	56th	5th	56th	38th	28th	25th	56th
Tulare	56th	26th	38th	45th	19th	51st	45th	47th	32nd	30th	13th	19th	33rd
Tuolumne	28th	20th	7th	29th	44th	3rd	23rd	28th	51st	22nd	41st	30th	48th
Ventura	21st	42nd	33rd	7th	7th	37th	10th	7th	12th	7th	48th	28th	8th
Yolo	17th	34th	51st	36th	18th	42nd	21st	33rd	11th	51st	14th	11th	20th
Yuba	50th	6th	34th	50th	31st	52nd	17th	53rd	26th	57th	25th	22nd	42nd

	<i>Family Domain</i>				<i>School Domain</i>			<i>Individual Domain</i>					
	F2.1	F2.2	F2.3	F2.4	S3.1	S3.2	S3.3	I4.1	I4.2	I4.3	I4.4	I4.5	I4.6
Alameda	30th	42nd	4th	40th	34th	15th	41st	13th	16th	22nd	24th	24th	28th
Alpine	37th	2nd	55th	58th	1st	55th	58th	58th	1st	49th	44th	4th	1st
Amador	9th	12th	20th	10th	6th	40th	55th	17th	3rd	5th	38th	10th	56th
Butte	47th	36th	53rd	55th	53rd	49th	44th	40th	8th	28th	34th	31st	38th
Calaveras	26th	10th	45th	33rd	19th	34th	7th	37th	22nd	6th	18th	8th	2nd
Colusa	19th	40th	15th	13th	7th	10th	43rd	50th	47th	18th	2nd	41st	3rd
Contra Costa	18th	28th	25th	25th	21st	29th	22nd	9th	12th	13th	19th	18th	22nd
Del Norte	52nd	56th	51st	53rd	22nd	58th	56th	45th	2nd	32nd	52nd	44th	4th
El Dorado	7th	26th	12th	24th	17th	47th	25th	32nd	57th	16th	26th	9th	57th
Fresno	55th	52nd	31st	41st	56th	20th	39th	39th	11th	54th	54th	56th	49th
Glenn	43rd	55th	41st	44th	31st	3rd	6th	18th	41st	31st	4th	40th	5th
Humboldt	36th	23rd	56th	32nd	47th	57th	52nd	46th	17th	41st	57th	22nd	51st
Imperial	56th	31st	22nd	20th	14th	11th	28th	44th	51st	23rd	29th	46th	29th
Inyo	24th	24th	38th	37th	5th	51st	31st	38th	32nd	12th	13th	35th	6th
Kern	48th	8th	33rd	34th	49th	22nd	18th	23rd	24th	44th	36th	54th	43rd
Kings	38th	13th	36th	19th	28th	9th	27th	53rd	38th	58th	48th	57th	7th
Lake	51st	37th	57th	46th	41st	56th	51st	30th	44th	19th	15th	38th	8th
Lassen	33rd	33rd	58th	51st	39th	27th	35th	41st	55th	40th	28th	25th	9th
Los Angeles	39th	39th	14th	47th	52nd	7th	9th	6th	13th	17th	9th	45th	31st
Madera	49th	32nd	40th	11th	44th	30th	50th	27th	46th	47th	53rd	55th	10th
Marin	1st	3rd	5th	6th	8th	31st	14th	47th	29th	27th	12th	2nd	27th
Mariposa	28th	22nd	47th	36th	29th	48th	30th	10th	48th	10th	39th	20th	11th
Mendocino	35th	51st	54th	49th	46th	54th	54th	48th	27th	37th	35th	30th	40th
Merced	57th	43rd	35th	15th	38th	12th	36th	31st	36th	55th	47th	52nd	24th
Modoc	45th	38th	24th	52nd	4th	5th	57th	1st	53rd	1st	7th	15th	12th
Mono	4th	44th	17th	14th	9th	1st	3rd	4th	15th	3rd	3rd	12th	13th
Monterey	22nd	19th	16th	9th	45th	45th	34th	20th	4th	26th	6th	53rd	47th
Napa	3rd	6th	1st	22nd	3rd	37th	8th	8th	52nd	2nd	11th	17th	14th
Nevada	5th	7th	32nd	23rd	48th	50th	19th	43rd	43rd	35th	49th	6th	52nd
Orange	12th	21st	3rd	5th	23rd	4th	2nd	16th	23rd	20th	8th	32nd	26th
Placer	6th	1st	27th	18th	16th	26th	12th	29th	26th	11th	22nd	5th	46th
Plumas	21st	29th	48th	30th	18th	8th	4th	54th	58th	57th	25th	3rd	58th
Riverside	29th	34th	19th	27th	30th	41st	42nd	2nd	18th	4th	33rd	47th	33rd
Sacramento	53rd	41st	37th	48th	50th	16th	45th	3rd	10th	14th	40th	39th	45th
San Benito	20th	16th	13th	8th	20th	13th	16th	11th	31st	21st	27th	48th	15th
San Bernardino	44th	25th	30th	29th	43rd	32nd	37th	7th	14th	36th	23rd	50th	35th

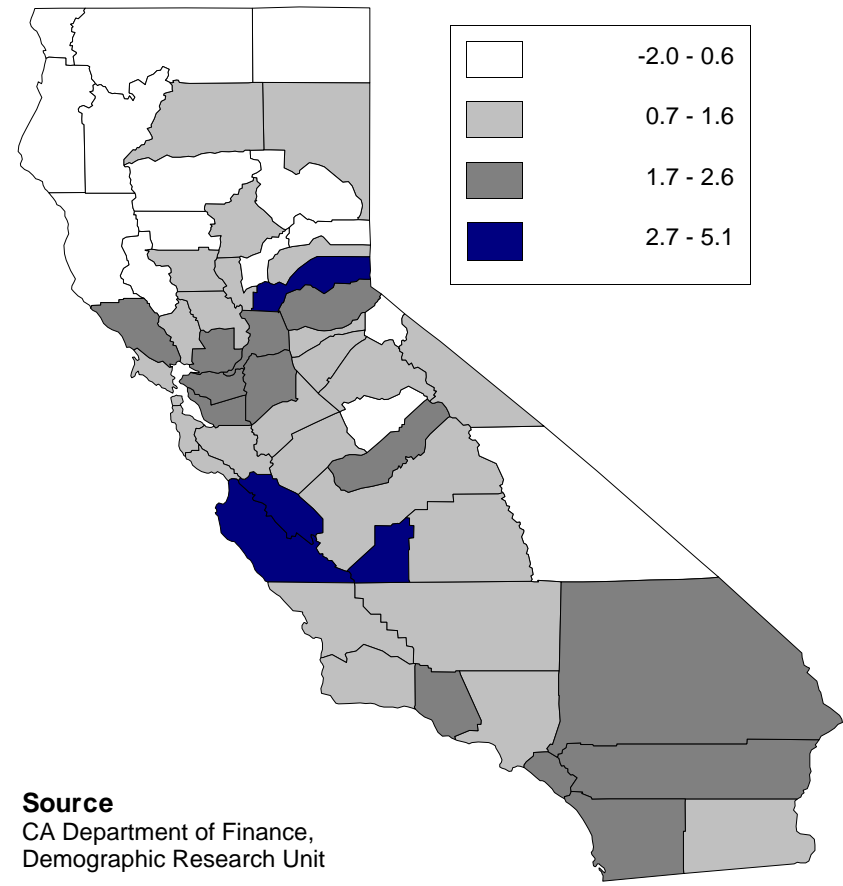
	Family Domain				School Domain			Individual Domain					
	F2.1	F2.2	F2.3	F2.4	S3.1	S3.2	S3.3	I4.1	I4.2	I4.3	I4.4	I4.5	I4.6
San Diego	23rd	45th	39th	21st	36th	18th	17th	15th	30th	24th	20th	34th	32nd
San Francisco	16th	*	9th	56th	58th	2nd	48th	22nd	37th	25th	32nd	13th	23rd
San Joaquin	50th	50th	18th	31st	11th	42nd	53rd	12th	9th	39th	46th	49th	42nd
San Luis Obispo	11th	4th	46th	26th	10th	39th	47th	28th	45th	7th	31st	7th	48th
San Mateo	2nd	15th	2nd	1st	13th	36th	23rd	14th	28th	15th	10th	14th	39th
Santa Barbara	17th	9th	29th	3rd	27th	25th	29th	52nd	33rd	46th	14th	33rd	37th
Santa Clara	14th	14th	6th	7th	35th	21st	20th	36th	20th	29th	30th	26th	30th
Santa Cruz	13th	5th	26th	17th	40th	44th	38th	56th	40th	53rd	37th	21st	44th
Shasta	46th	48th	43rd	42nd	32nd	33rd	21st	24th	39th	56th	58th	36th	41st
Sierra	15th	17th	11th	54th	26th	6th	1st	57th	56th	51st	1st	1st	16th
Siskiyou	41st	35th	44th	57th	55th	28th	13th	42nd	35th	34th	5th	27th	50th
Solano	25th	46th	7th	12th	15th	23rd	24th	21st	19th	43rd	45th	29th	53rd
Sonoma	8th	27th	10th	4th	37th	46th	33rd	51st	54th	30th	41st	19th	54th
Stanislaus	42nd	54th	28th	16th	51st	38th	49th	25th	7th	45th	42nd	43rd	25th
Sutter	31st	47th	34th	39th	57th	17th	40th	5th	5 th	8th	43rd	37th	17th
Tehama	40th	57th	50th	45th	25th	35th	11th	35th	50th	42nd	55th	42nd	18th
Trinity	34th	18th	52nd	43rd	2nd	53rd	15th	55th	42nd	48th	17th	23rd	19th
Tulare	54th	30th	21st	35th	54th	43rd	46th	19th	49th	38th	50th	58th	34th
Tuolumne	27th	20th	42nd	28th	12th	52nd	32nd	26th	21st	50th	56th	16th	20th
Ventura	10th	49th	8th	2nd	24th	24th	5th	34th	25th	33rd	21st	28th	36th
Yolo	32nd	11th	23rd	38th	33rd	19th	10th	49th	34th	52nd	51st	11th	55th
Yuba	58th	53rd	49th	50th	42nd	14th	26th	33rd	6th	9th	16th	51st	21st

* Note: San Francisco is excluded from F2.1 state ranking due to error in SF County reporting.

Indicator 1.1
Annual Unemployment Rate
Community Domain



Indicator 1.2
Population Growth Per Annum (% Change)
Community Domain



Indicator 1.3

Legal Foreign Immigration Rate per 100,000 Population

Community Domain



Indicator 1.4

Reported Crime Rate per 100,000 Population

Community Domain



Indicator 1.5

Retail Alcohol Outlets per 100,000 Population

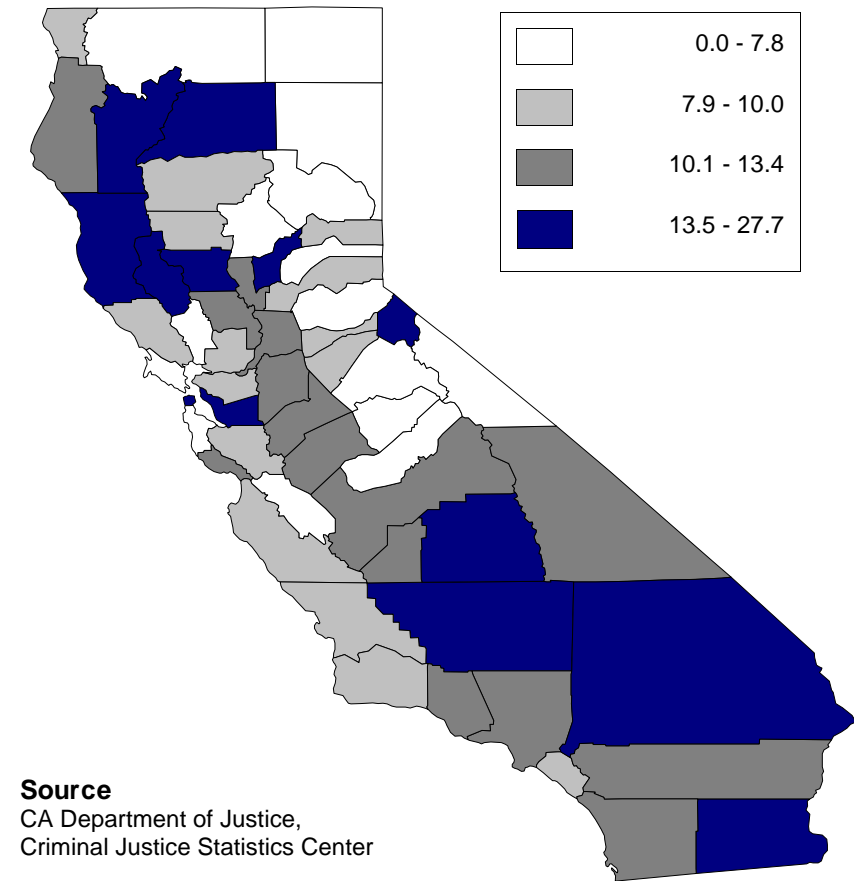
Community Domain



Indicator 1.6

Adult Arrests for Drug Offenses per 1,000 Population 18-69

Community Domain



Indicator 1.7

Adult Arrests for DUI per 1,000 Population 18-69

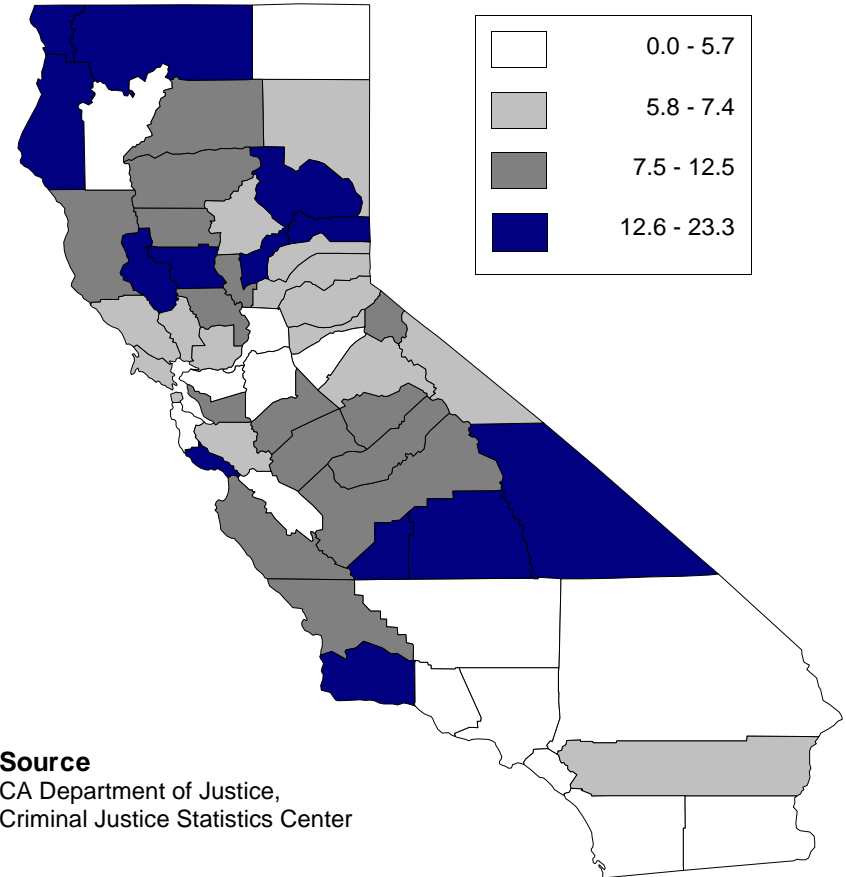
Community Domain



Indicator 1.8

Adult Arrests for Alcohol Violations per 1,000 Population 18-69

Community Domain



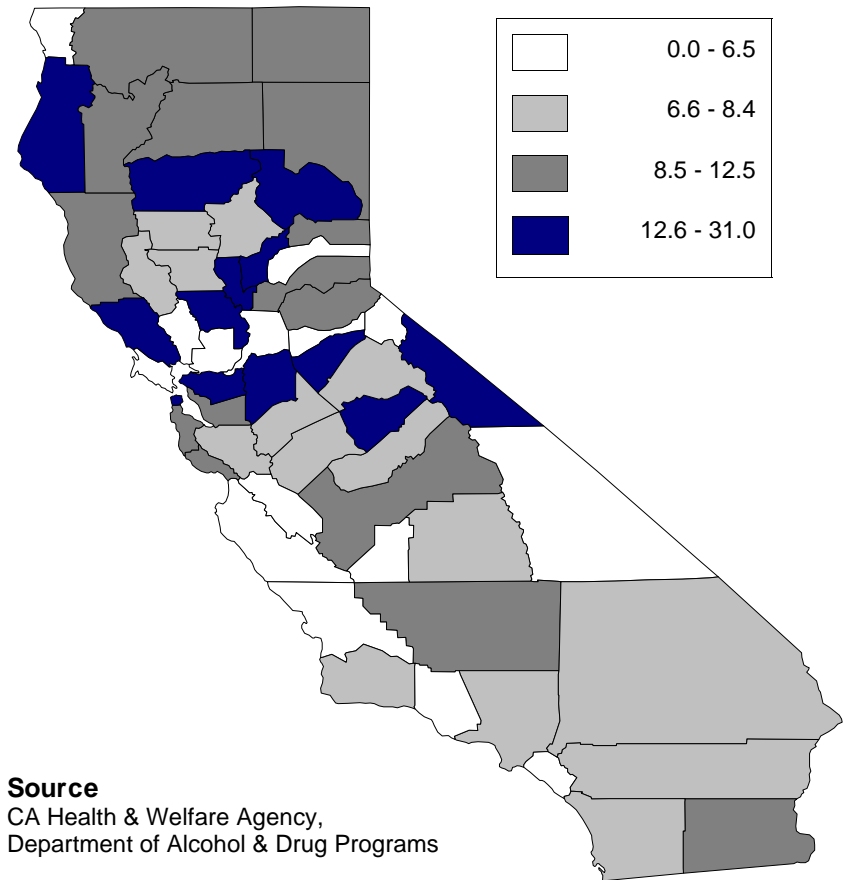
Indicator 1.9

Alcohol-Involved Motor Vehicle Accidents per 1,000 Drivers
Community Domain



Indicator 1.10

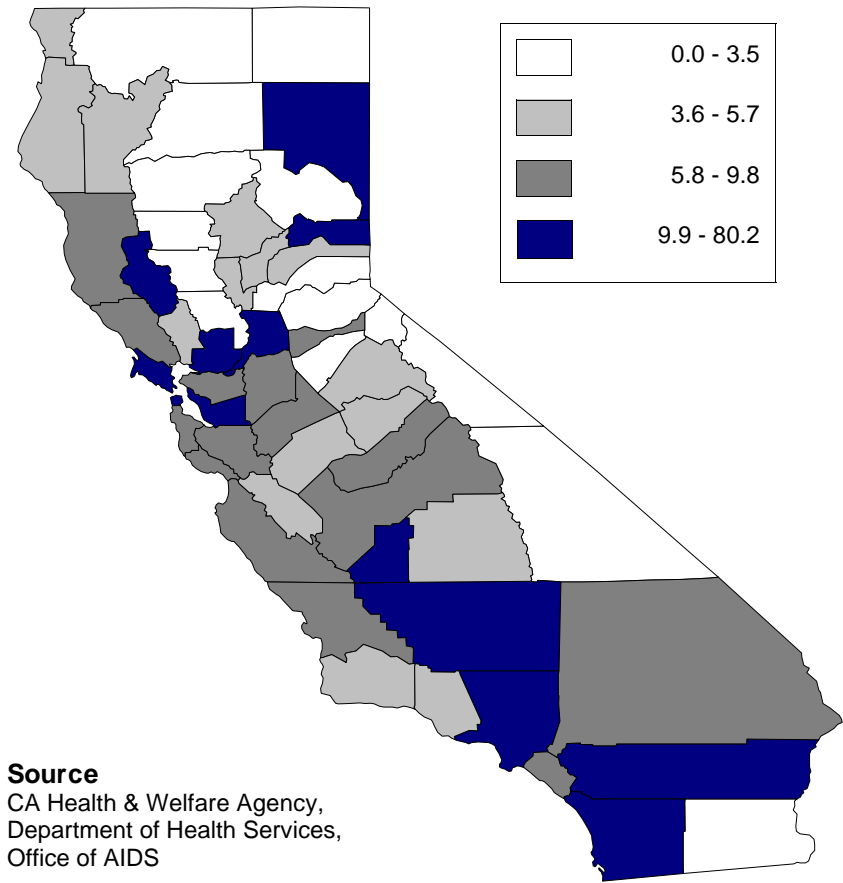
Adult AOD Treatment Admissions per 1,000 Population Over 18
Community Domain



Indicator 1.11
Hospital Discharges for AOD Related Causes per 100,000
Community Domain



Indicator 1.12
AIDS Case Rate per 1,000 Population
Community Domain



Indicator 1.13
Deaths Due to AOD Related Causes per 100,000 Population
Community Domain



Indicator 2.1
TANF Recipients as a % of Total Population
Family Domain



Indicator 2.2

Domestic Violence Calls per 1,000 Population Ages 18-69
Family Domain



Indicator 2.3

Emergency Response Dispositions per 1,000 Population Under 18
Family Domain



Indicator 2.4

Foster Care Placements per 1,000 Population Under 18 Years
Family Domain



Indicator 3.1

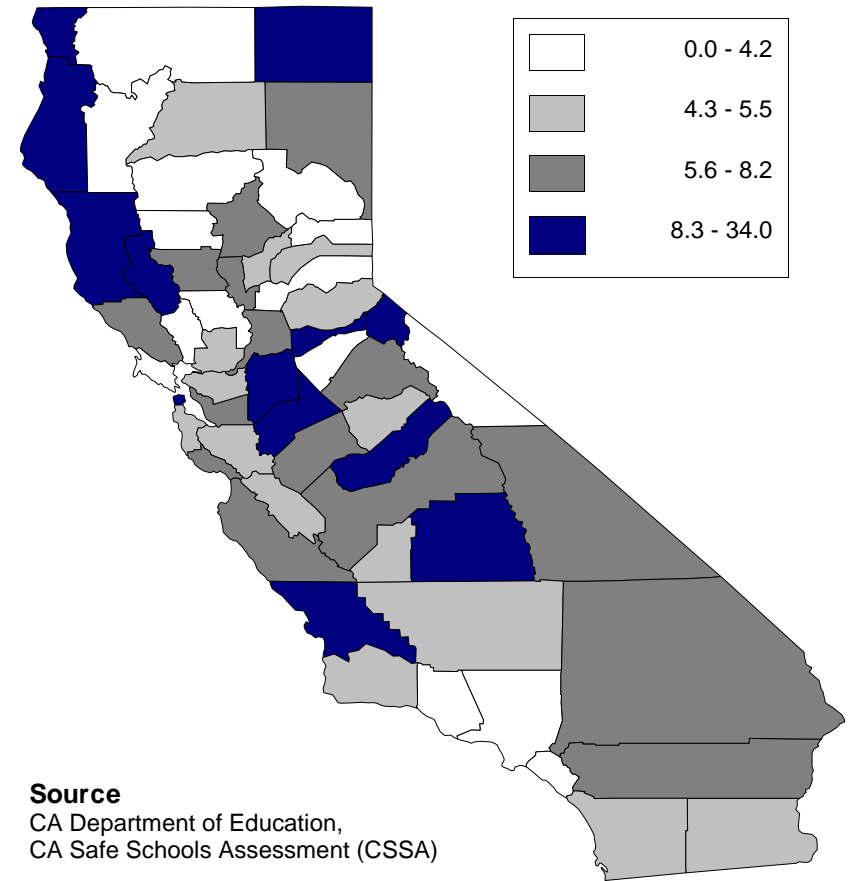
Annual High School Dropout Rate per 100 Students Enrolled
School Domain



Indicator 3.2
School Alcohol & Drug Incidents per 1000 Students Enrolled
School Domain



Indicator 3.3
School Violence Incidents per 1000 Students Enrolled
School Domain



Indicator 4.1

Juvenile Arrests for AOD Offenses per 1,000 Youth Age 10-17
Individual/Peer Domain



Indicator 4.2

Adolescent Treatment Admits per 100,000 Population Under 18
Individual/Peer Domain



Indicator 4.3

Reported Runaways per 1,000 Youth Under Age 18

Individual/Peer Domain



Indicator 4.4

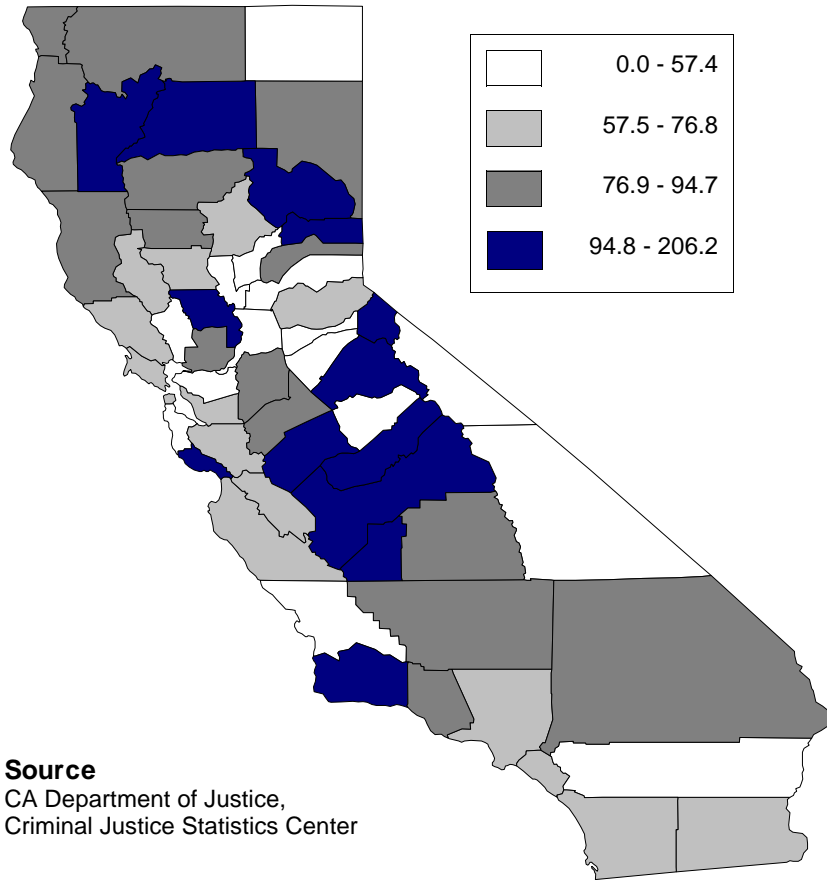
Births to Teens per 1,000 Female Population Ages 15-19

Individual/Peer Domain



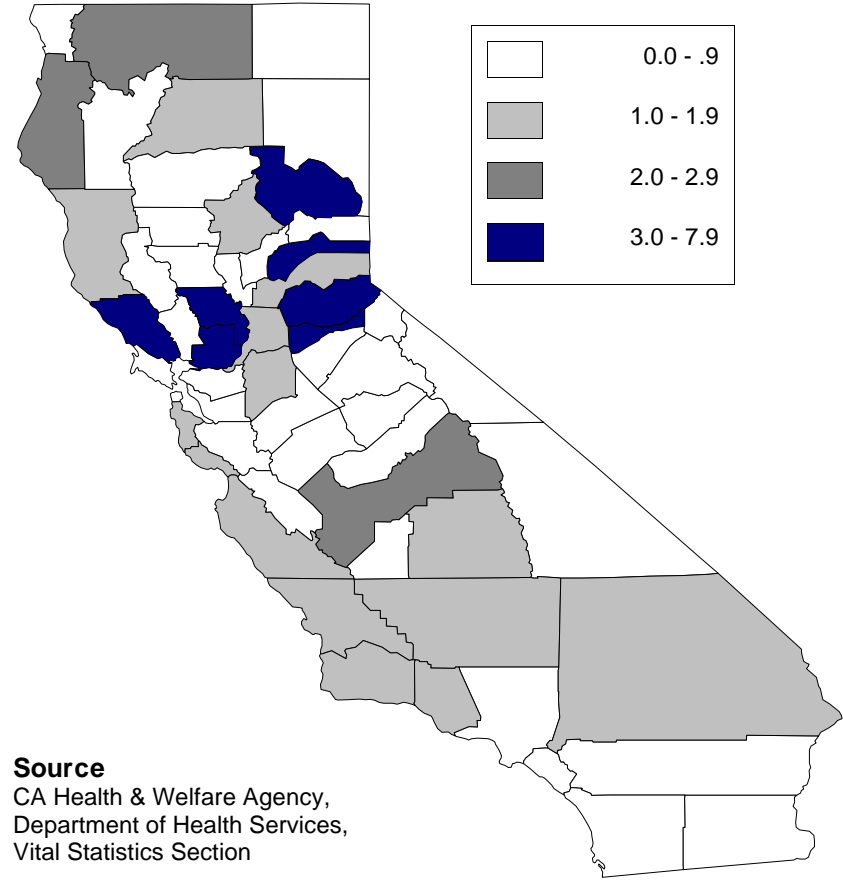
Indicator 4.5

Juvenile Law Enforcement Dispositions per 1,000 Under Age 18
Individual/Peer Domain



Indicator 4.6

Adolescent Suicides per 1,000 Population Under Age 18
Individual/Peer Domain



APPENDICES

Appendix A
Listing of County Clusters and Description of Demographic Characteristics

Cluster		Description
Urban "A"		
Fresno Imperial Kings Los Angeles	Merced Monterey Tulare	Largely urban, with small (1%) to moderate (31%) rural populations; above average poverty levels; race/ethnically diverse with prominent Hispanic populations approaching or exceeding a majority in several counties; low educational attainment among residents of most counties (noted exceptions are Los Angeles and Monterey counties); youth populations account for above average percentage of total county population
Urban "B"		
Alameda Contra Costa Orange Sacramento San Diego San Francisco	San Mateo Santa Clara Solano Ventura Yolo	Predominantly urban, with zero to eleven percent of total populations living in rural areas; low or average rates of poverty; race/ethnically diverse with largest Black and Asian populations; highest educational attainment on average across county subgroups; youth account for lower than average proportion of total population
Urban "C"		
Butte Marin Napa Placer	San Luis Obispo Santa Cruz Sonoma	Largely urban, with small (7%) to moderate (34%) rural populations; lower than average poverty (excluding Butte county); predominantly White, with small (9%) to moderate (26.8%) Hispanic populations and smaller than average Black, Asian, and Native American populations; youth account for lower than average proportion of total population.
Urban "D"		
Kern Riverside San Bernardino San Joaquin	Santa Barbara Stanislaus Sutter Yuba	Largely urban, with small (6%) to moderate (28%) rural populations; average to above average poverty rates; race/ethnically diverse with moderate to large Hispanic populations and larger than average Black and Asian populations; low levels of educational attainment among county residents (excluding Santa Barbara county); youth populations account for above average percentage of total county population.
Rural "E"		
Colusa Glenn	Madera San Benito	Largely rural, with 48 to 72 percent of the population living outside of urban areas; higher than average poverty rates (excluding San Benito); predominantly White (50.8%) and Hispanic (42.1%), with Blacks, Asians, and Native Americans accounting for less than five percent of the total population; very low levels of educational attainment; youth populations account for above average percentage of total county population.
Rural "F"		
El Dorado Humboldt Inyo	Mono Shasta Trinity	Largely rural, with 45 to 72 percent of the population living outside of urban areas; low to above average poverty rates; lower than average levels of educational attainment among most counties; predominantly White (81.7%) with small minority Hispanic (9.3%) and Native American (4.1%) populations; Blacks and Asians account for less than two percent of the total population across counties.
Rural "G"		
Amador Del Norte Lake Lassen Mendocino	Modoc Nevada Siskiyou Tehama Tuolumne	Comparable demographic composition to Subgroup 6 with proportionately larger rural populations
Rural "H"		
Alpine Calaveras Mariposa	Plumas Sierra	Predominantly rural, with 70 to 100 percent of population living outside of urban areas; race/ethnically homogenous, with small minority Hispanic (7%) and Native American populations (4.8%); Blacks and Asians together account for one percent of the total population; lower than average educational attainment among county residents.

Appendix B
Sources of Indicator Data

Domain	Subdomain	Indicator	Data Source
I. Community Domain	Social/Economic Stability	Unemployment	CA Health and Welfare Agency, Employment Development Department Labor Market Information Division; http://www.cahwnet.gov
		Population Growth	CA Department of Finance, Demographic Research Unit; http://www.dof.ca.gov
		Legal Foreign Immigration	CA Department of Finance, Demographic Research Unit; http://www.dof.ca.gov
		Reported Crimes	CA Department of Justice, Criminal Justice Statistics Center; http://caag.state.ca.us/cjsc
	Alcohol Availability	Retail Liquor Licenses	CA Alcohol Beverage Control; http://www.abc.ca.gov
	Adult Alcohol and Other Drug Use	Adult Arrests for Drug Related Offenses	CA Department of Justice, Criminal Justice Statistics Center; http://caag.state.ca.us/cjsc
		Adult Arrests for Driving Under the Influence	CA Department of Justice, Criminal Justice Statistics Center; http://caag.state.ca.us/cjsc
		Adult Arrests for Alcohol Violations	CA Department of Justice, Criminal Justice Statistics Center; http://caag.state.ca.us/cjsc
		Alcohol Involved Motor Vehicle Accidents	California Highway Patrol, Statewide Integrated Traffic Safety Unit (SWITRS); http://www.chp.ca.gov
		Alcohol and Drug Treatment Admissions	CA Health and Human Services Agency, CA Department of Alcohol and Drug Programs; http://www.cahwnet.gov
		Hospital Discharges Due to Alcohol and Other Drug Use	CA Health and Human Services Agency, CA Department of Alcohol and Drug Programs; http://www.cahwnet.gov
		HIV/AIDS Incidence	CA Health and Human Services Agency, Office of AIDS; http://www.cahwnet.gov
		Deaths Due to Alcohol and Other Drug Use	CA Health and Human Services Agency, CA Department of Alcohol and Drug Programs; http://www.cahwnet.gov
	II. Family Domain	Family Risk	AFDC
Family Functioning		Domestic Violence Calls for Assistance	CA Department of Justice, Criminal Justice Statistics Center; http://caag.state.ca.us/cjsc
		Emergency Response Dispositions	CA Health and Welfare Agency, Department of Social Services, Statistical Services Bureau; http://www.cahwnet.gov

Domain	Subdomain	Indicator	Data Source
II. Family Domain		Children in Foster Care	CA Health and Welfare Agency, Department of Social Services, Statistical Services Bureau; http://www.cahwnet.gov
III. School Domain	Academic Risk	High School Dropouts	CA Department of Education, California Basic Education Demographics (CBEDS); http://www.cde.ca.gov
	Problem Behaviors	School Alcohol and Drug Related Crime Incidents	CA Department of Education, California Safe School Assessment (CSSA); http://www.cde.ca.gov
		School Violence Incidents	CA Department of Education, California Safe School Assessment (CSSA); http://www.cde.ca.gov
IV. Individual Domain	Youth Alcohol and Other Drug Use	Treatment Admissions Under 18 Years	CA Health and Human Services Agency, CA Department of Alcohol and Drug Programs; http://www.cahwnet.gov
		Juvenile Arrests for Alcohol and Drug Related Offenses	CA Department of Justice, Criminal Justice Statistics Center; http://caag.state.ca.us/cjsc
	AOD Risk and Consequences	Reported Runaways	CA Department of Justice, Law Enforcement Information Center, Missing and Unidentified Persons Unit (MUPS); http://caag.state.ca.us/cjsc
		Teen Births	CA Department of Health Services, Vital Statistics Section; http://www.cahwnet.gov
		Juvenile Law Enforcement Dispositions	CA Department of Justice, Law Enforcement Information Center; http://caag.state.ca.us/cjsc
		Adolescent Suicide	CA Department of Health Services, Vital Statistics Section; http://www.cahwnet.gov